

 **Professional Aviation**
ASSOCIATES
A GREENWICH AEROGROUP COMPANY

105 Southfield Parkway, Suite 300
Forest Park, GA 30297
800.283.2105
proaviation.com

BEECHCRAFT - KING AIR

PARTS CATALOG

TABLE OF CONTENTS

ATA Chapter	Page
21 Air Conditioning & Environmental	4
22 Autoflight	6
23 Communications	7
24 Electrical Power	7
25 Furnishings	8
26 Fire Protection	8
27 Flight Controls	8
28 Fuel	10
30 Ice & Rain Protection	11
31 Instruments	13
32 Landing Gear	17
33 Lighting	20
34 Navigation	21
35 Oxygen	22
36 Pneumatic	22
38 Water & Waste	22
39 Electrical Panels, Parts & Instruments	22
56 Windows	23
61 Propellers	23
71 Power Plant	24
73 Engine Fuel Control	26
75 Engine Air	27
77 Engine Indicating	27
79 Engine Oil	27
91 Printed Circuit Boards	28
Numerical Parts Listing	31

WELCOME TO PROFESSIONAL AVIATION ASSOCIATES

Over the past three decades, Professional Aviation Associates has been a leading provider of quality parts support for the aerospace industry, offering an exhaustive inventory of airframe components, landing gear, rotables, hydraulics, engine accessories, electrical items, custom hoses, instruments and avionics at very competitive pricing for highly efficient turnaround.

PAA is conveniently located adjacent to Atlanta's Hartsfield-Jackson International Airport, allowing us to offer immediate response to AOG shipments worldwide, 24 hours a day.

We are the largest independent supplier of rotables and airframe parts for the Beechcraft King Air series, Beech 1900, C-12, T-44 and Beechjet aircraft and our 46,000 square foot facility features over 100,000 line items of inventory for Cessna Citation, Cessna and Piper Aircraft. PAA also provides comprehensive rotatable exchange programs and inventory support solutions for Agusta, Bell, Eurocopter, and Sikorsky helicopters.

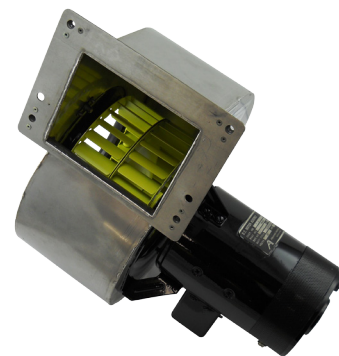
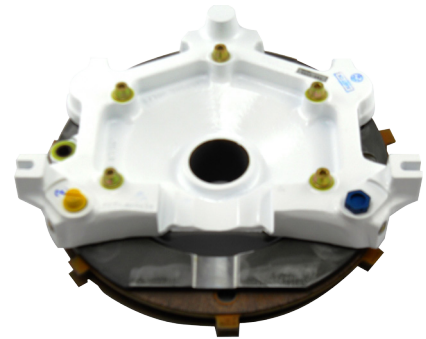
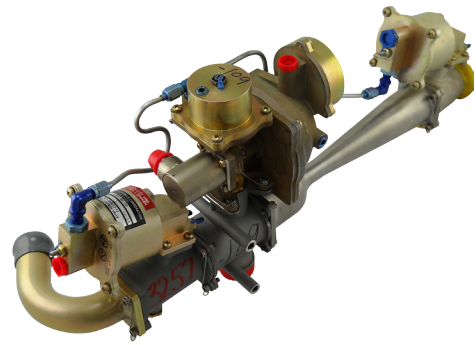
PAA keeps over \$15 million of avionics equipment available in-stock at all times for your convenience. We are a global Parker- Hannifin Stratoflex fluid conveyance distributor and FAA/TSO-certified manufacturing hose shop with extensive capabilities and a knowledgeable, experienced staff.

Whether you need a part, hose requirement or complete overhaul, we hope PAA will be your first stop. Our online parts inventory search makes finding what you need even easier: <http://proaviation.com/inventory/>

At PAA, customer satisfaction is always our first priority. Our goal is to make your AOG time as short and as productive as possible. We make sure you will find the experience pleasant and profitable.

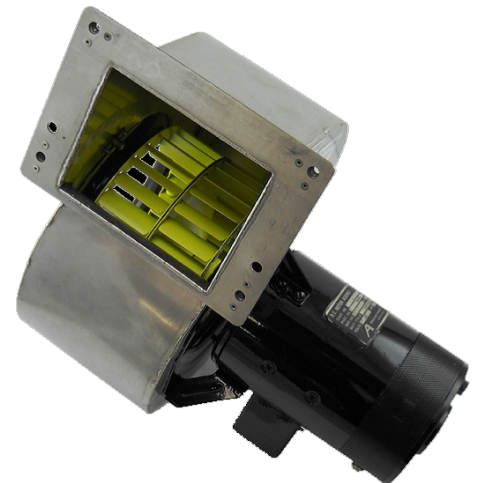
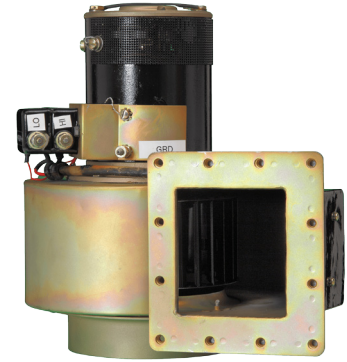
Chapter 21 Air Conditioning & Environmental

21	126106	SUPERCHARGER
21	1520614	VALVE, SHUT OFF
21	1523258	RECEIVER/DRYER
21	8540088	COIL, CONDENSOR
21	8541010	HEAT EXCHANGER
21	8544078	EVAPORATOR
21	0113-9	BLOWER, COMB AIR
21	07E02-1	HEATER
21	100-384072-5	MOTOR
21	100-384135-1	MOTOR
21	10011A	COIL, CONDENSOR
21	101-380013-11	PNEUMOSTAT
21	101-380013-13	FLOW PACK
21	101-380013-15	FLOW PACK
21	101-380013-17	FLOW PACK
21	101-380025-17	CONTROLLER
21	101-380025-21	FLOW PACK, ELECTRONIC
21	101-381010-1	HEAT EXCHANGER
21	101-381011-1	VALVE, BLEED AIR SHUTOFF
21	101-381011-11	VALVE, BLEED AIR SHUTOFF
21	101-381011-5	VALVE, BLEED AIR SHUTOFF
21	101-381011-9	VALVE, BLEED AIR SHUTOFF
21	101-381012-3	VALVE, SHUTOFF
21	101-384003-1	COIL, CONDENSOR
21	101-384003-5	COIL, CONDENSOR
21	101-384003-7	COIL, CONDENSOR
21	101-384004-1	BLOWER, ASSEMBLY
21	101-384004-5	BLOWER, ASSEMBLY
21	101-384004-9	BLOWER, ASSEMBLY
21	101-384024-1	COIL, CONDENSOR
21	101-384026-7	BLOWER
21	101-384079-1	RECEIVER/DRYER
21	101-384079-3	RECEIVER/DRYER
21	101-384100-1	BLOWER, VENT
21	101-384108-1	THERMOSTAT
21	101-384135-3	BLOWER, ASSEMBLY
21	101-384176-1	BLOWER, VENT
21	101-384177-9	MOTOR, SPEED CONTROL
21	101-384217-1	VALVE
21	102-384026-1	HEATER
21	102-384031-1	BLOWER
21	102464-26	CONTROL, PRESSURIZATION
21	102464-36	CONTROL, PRESSURIZATION
21	103456-4	VALVE, OUTFLOW
21	103460-5	VALVE, OUTFLOW
21	103460-7	VALVE, OUTFLOW
21	103570-14	VALVE, OUTFLOW
21	103598-12	VALVE, OUTFLOW
21	103598-2	VALVE, OUTFLOW
21	103646-1	VALVE, OUTFLOW
21	103648-1	VALVE, OUTFLOW
21	103648-4	VALVE, OUTFLOW



CHAPTER	PART NUMBER	DESCRIPTION
21	103648-5	VALVE, OUTFLOW
21	103648-7	VALVE, OUTFLOW
21	114-380028-1	BLOWER
21	114-380039-1	VALVE, BYPASS
21	114-380040-5	SENSOR
21	114-380042-15	VALVE, SHUTOFF
21	114-380042-17	VALVE, SHUTOFF
21	115-384001-3	MOTOR, FAN
21	115-384002-5	EVAPORATOR
21	11C30	IGNITION ASSEMBLY
21	129-380001-5	SENSOR
21	130346-1	CONTROL, PRESSURIZATION
21	130346-11	CONTROL, PRESSURIZATION
21	130346-12	CONTROL, PRESSURIZATION
21	130346-6	CONTROL, PRESSURIZATION
21	130346-7	CONTROL, PRESSURIZATION
21	130374-22	CONTROL, PRESSURIZATION
21	130374-29	CONTROL, PRESSURIZATION
21	1520T100-109	FLOW PACK
21	1520T100-111	FLOW PACK
21	1520T100-113	FLOW PACK
21	1520T100-115	FLOW PACK
21	1520T100-14	PNEUMOSTAT
21	1520T100-2	PNEUMOSTAT
21	1936T100-1	RECEIVER/DRYER
21	19A1860	BLOWER
21	1H98-2	FLOW PACK, ELECTRONIC
21	2100101-2	BLOWER, COMB AIR
21	22E24-1	SENSOR
21	22E24-3	SENSOR
21	24E88-7	VALVE, SHUTOFF
21	24E88-8	VALVE, SHUTOFF
21	26501-2	MOTOR, AC COMPRESSOR
21	2BC31N1B	MOTOR
21	3009C	PUMP, HEATER FUEL
21	35-380092-1	SWITCH, DIFF PRESSURE
21	38E85-2B	REGULATOR, BLEED AIR
21	4706-20	VALVE, SHUTOFF
21	4706-22	VALVE, SHUTOFF
21	4706-4	VALVE, SHUTOFF
21	4706-5A	VALVE, SHUTOFF
21	50-380041-1	MOTOR, AC COMPRESSOR
21	50-380041-3	MOTOR, AC COMPRESSOR
21	50-380041-5	MOTOR, AC COMPRESSOR
21	50-380116	BLOWER, VENT
21	50-389096-1	VALVE, SHUTOFF
21	50-554228-147	HEATER, ASSEMBLY
21	50-554341-	VALVE, BY PASS ASSEMBLY
21	5001-4	BLOWER
21	5004-1	BLOWER
21	56-2-1	MOTOR
21	5D875-005	EVAPORATOR
21	60-384002-5	BLOWER, ASSEMBLY

CHAPTER	PART NUMBER	DESCRIPTION
21	60-384002-7	BLOWER, ASSEMBLY
21	60-384002-9	BLOWER, ASSEMBLY
21	90-380000-3	REGULATOR, BLEEDAIR
21	90-380010-1	SWITCH, DIFF.E152 PRESSURE
21	90-384019-1	RECEIVER/DRYER
21	90-384031-1	BLOWER
21	97-380000-17	PNEUMOSTAT
21	97-380000-33	FLOW PACK
21	99-380010-3	VALVE, BLEEDAIR SHUTOFF
21	99-384033-7	BLOWER, COMB AIR
21	A24A9238	BLOWER, COMB AIR
21	AV1B1614	VALVE, SHUTOFF
21	AYLF2336-2	OAT SENSOR
21	AYLF50304	SENSOR ELEMENT
21	BYLB50822	VALVE, BLEED AIR SHUTOFF
21	BYLB50824	VALVE, BYPASS
21	BYLB51089	VALVE, SHUTOFF
21	C10D40	HEATER, ASSEMBLY
21	C241-500B	BLOWER, ASSEMBLY
21	C241-500BB	BLOWER, ASSEMBLY
21	C241-500BD	BLOWER, ASSEMBLY
21	C241-500C	BLOWER, ASSEMBLY
21	C316A	BLOWER, ASSEMBLY
21	CYLZ5346	CONTROL BOX
21	CYLZ8968	CONTROL BOX
21	CYLZ9860-1	CONTROL BOX, TEMP.
21	EM2091-6	MOTOR
21	EM55-6	MOTOR
21	EM55-7	MOTOR
21	EM603-7	BLOWER, ASSEMBLY
21	EM603-9	BLOWER, ASSEMBLY
21	EM609-4	BLOWER, ASSEMBLY
21	EM630	BLOWER, ASSEMBLY
21	EM640-1	BLOWER, VENT
21	F7-51-5	CONTROLLER
21	HYLZ50336-1	CONTROL BOX, TEMP.
21	HYLZ51071	CONTROL BOX, TEMP.
21	M3436MB	MOTOR, FAN
21	M7921C-2B	FAN, CONDENSOR
21	NYLC50427	VALVE, MOTOR
21	NYLC51101	ACTUATOR
21	NYLC9871	VALVE, MOTOR
21	X702-287	BLOWER, COMB AIR



Chapter 22 Autoflight

CHAPTER	PART NUMBER	DESCRIPTION
22	522-2900-099	AUTOPILOT AMPLIFIER
22	622-3108-021	AUTO PILOT
22	622-8315-402	AUTOPILOT COMPUTER
22	622-9724-030	AUTOPILOT COMPUTER APC-65H

Chapter 23 Communications

23	15330	STATIC WICK
23	15340	STATIC WICK
23	15347	STATIC WICK, BASE
23	15348	STATIC WICK, EPOXY KIT
23	15401	STATIC WICK, BASE
23	ESD-3	STATIC WICK
23	ESD-4C	STATIC WICK
23	064-1015-01	HF RT W/SELCAL
23	064-1017-01	HF POWER AMPLIFIER / COUPLER
23	066-01143-0601	TRANSPONDER
23	622-1270-001	ATC XPONDER TDR-90
23	622-6152-001	VHF COMM TRANSCEIVER
23	622-6152-011	VHF COMM RECEIVER
23	622-6263-003	DME RT
23	622-6521-013	CONTROLLER
23	622-7292-101	VHF COMM
23	7516100-60050	SATELLITE DATA UNIT
23	7516250-60050	HIGH POWER AMPLIFIER
23	822-1115-001	VHF COMM TRANSCEIVER (8.33)

Chapter 24 Electrical Power

CHAPTER	PART NUMBER	DESCRIPTION
24	20051	STATIC INVERTER
24	20139	STATIC INVERTER
24	100-389005-11	GENERATOR, STARTER
24	101-361096-1	PC BOARD
24	101-364270-1	GENERATOR, CONTROL
24	101-364270-5	GENERATOR, CONTROL
24	101-380007-3	VALVE, SHUT OFF
24	101-384009-1	INDICATOR
24	101-389007-1	GENERATOR, STARTER
24	23048-006	GENERATOR, STARTER
24	23048-016	GENERATOR, STARTER
24	23048-018	GENERATOR, STARTER
24	23085-001	GENERATOR, STARTER
24	50-380076-5	GENERATOR, STARTER
24	50-384112-1	RELAY
24	51530-001 SERIES	GENERATOR, CONTROL
24	51530-007B	GENERATOR, CONTROL
24	51538-001A	GENERATOR, CONTROL
24	6041H189	RELAY
24	6041H205A	RELAY
24	A-1090	START PANEL
24	AN2552A3A	EXT PWR RECEPTACLE
24	CSV1105-2	REGULATOR
24	CSV1105-20	REGULATOR
24	CSV1152-10	REGULATOR

24	MC815AS1	CONTROL, LANDING GEAR
24	PC 125	STATIC INVERTER
24	PC15A	STATIC INVERTER
24	PC15BC	STATIC INVERTER
24	PC17	STATIC INVERTER
24	PC17-3	STATIC INVERTER
24	PC17A	STATIC INVERTER
24	PC250	STATIC INVERTER
24	PC251	STATIC INVERTER
24	PC350	STATIC INVERTER
24	VR1010-24-1A	REGULATOR, VOLTAGE

Chapter 25 Furnishings

CHAPTER	PART NUMBER	DESCRIPTION
25	5725	PUMP, ASSEMBLY KIT
25	17000-382	PUMP

Chapter 26 Fire Protection

CHAPTER	PART NUMBER	DESCRIPTION
26	30301102	BOTTLE, FIRE EXTINGUISHER
26	101-570022-11	SWITCH
26	13083-5	FIRE CARTRIDGE
26	30-304	AMPLIFIER
26	30-326-7	AMPLIFIER
26	861-006	BOTTLE, FIRE EXTINGUISHER

Chapter 27 Flight Controls

CHAPTER	PART NUMBER	DESCRIPTION
27	100-384040	FLAP, MOTOR
27	100-384040-3	FLAP, MOTOR
27	100-384092-1	CLOCK, 24 HOUR
27	100-524073-1	FLAP, MOTOR & GEARBOX
27	100-524074-1	FLAP, GEARBOX
27	101-130003-1	AILERON, LH
27	101-130003-609	AILERON, RH
27	101-130003-610	AILERON
27	101-160001-7+D328	FLAP
27	101-160001-17	FLAP
27	101-160001-18	FLAP
27	101-160001-2	FLAP
27	101-160001-20	FLAP
27	101-160001-28	FLAP
27	101-160001-31	PI
27	101-380005-17	COMPUTER, LIFT
27	101-380005-19	COMPUTER, LIFT
27	101-380005-23	COMPUTER, LIFT
27	101-380005-27	COMPUTER, LIFT
27	101-380005-9	STALL VANE
27	101-384209-1	FLAP, POSITION INDICATOR
27	101-521016-1	FLAP, ACTUATOR

CHAPTER	PART NUMBER	DESCRIPTION
27	101-521016-2	FLAP, ACTUATOR
27	101-521039-1	ACTUATOR, TRIM
27	101-524072-1	ACTUATOR, TRIM
27	101-524079-3	ACTUATOR, TRIM
27	101-524092-1	ACTUATOR, TRIM
27	101-524973-1	SERVO
27	101-610000-	ELEVATOR
27	1136T100-23	ACTUATOR, HORZ STAB
27	114-380051-1	LIFT, TRANSDUCER
27	115-380111-19	ACTUATOR, HORZ STAB
27	115-521107-605	ACTUATOR, AILERON TRIM
27	1900-7.4-1	SERVO
27	27-6	FLAP, MOTOR
27	309-4301	SWITCH, TRIM,
27	319A280	MOTOR, TRIM
27	33-130000-4435-165050-	AILERONFLAP
27	3601-2	COMPUTER, LIFT
27	3601-35	COMPUTER, LIFT
27	3601-42	COMPUTER, LIFT
27	3601-7	COMPUTER, LIFT
27	3701-10	TRANSDUCER
27	3701-250-130002-	TRANSDUCER AILERON
27	50-160003-97	FLAP
27	50-364090-	FLAP, MOTOR
27	50-521152-1	FLAP, ACTUATOR INBOARD LH
27	50-521152-2	FLAP, ACTUATOR INBOARD RH
27	50-521198-3	FLAP, ACTUATOR OUTBOARD LH
27	50-521198-4	FLAP, ACTUATOR OUTBOARD RH
27	50-521222-3	FLAP, ACTUATOR INBOARD LH
27	50-521222-4	FLAP, ACTUATOR INBOARD RH
27	50-521223-3	FLAP, ACTUATOR OUTBOARD LH
27	50-521223-4	FLAP, ACTUATOR OUTBOARD RH
27	50-524161-	ACTUATOR
27	50-610000-	ELEVATOR
27	60-130001-163	AILERON
27	60-610000-	ELEVATOR
27	6046H39	RELAY
27	6046H39A	RELAY
27	6046H39B	RELAY
27	795-13	LIFT, DETECTOR
27	795-3	LIFT, DETECTOR
27	795-5	LIFT, DETECTOR
27	795-6	LIFT, DETECTOR
27	795-9	LIFT, DETECTOR
27	90-160000-	FLAP
27	95-160000-	FLAP
27	96-526000-	ACTUATOR, TRIM RUDDER
27	96-526000-605	ACTUATOR, TRIM RUDDER
27	96-610006-601	ELEVATOR W/TAB
27	96-610006-655	ELEVATOR W/TAB
27	99-130000-	AILERON
27	99-524025-	FLAP, MOTOR & GEARBOX
27	99-524025-7	FLAP, MOTOR & GEARBOX

CHAPTER	PART NUMBER	DESCRIPTION
27	AN5786-1	FLAP, POSITION TRANSMITTER
27	BZ7RW82255518T	FLAP, SWITCH
27	EA173E-2	FLAP, POSITION TRANSMITTER
27	EM404	FLAP, MOTOR & GEARBOX
27	EM407	FLAP, MOTOR & GEARBOX
27	EM407-1	FLAP, MOTOR & GEARBOX
27	EM508	GEAR BOX
27	FS36-1	FLAP, MOTOR
27	MS24523-23	SWITCH, ELEVATOR TRIM
27	P2-110311	SWITCH, TRIM DISCONNECT
27	PM23-5	MOTOR, PRIMARY
27	PM24-1	MOTOR, PRIMARY
27	PM46-1	MOTOR, PRIMARY
27	SM50D7	RELAY

Chapter 28 Fuel

CHAPTER	PART NUMBER	DESCRIPTION
28	71154	PUMP, FUEL
28	72443	PUMP, FUEL
28	72444002-920013-	PUMP,FUEL CELLFUEL
28	002-920033-	FUEL CELL
28	002-920034-100-380006	TRANSMITTER,FUEL CELL FUEL QTY.
28	100-380006-47	INDICATOR, FUEL QUANTITY
28	100-381000-	FUEL CELL
28	100-381001-	FUEL CELL
28	100-381002-	FUEL CELL
28	100-389020-1	VALVE, MOTIVE FLOW
28	101-381002-	FUEL CELL
28	101-384150-7	INDICATOR, FUEL QUANTITY
28	101-384151-3	INDICATOR, FUEL QUANTITY
28	101-384151-5	INDICATOR, FUEL QUANTITY
28	101-389025-1	VALVE, SHUTOFF
28	101-389025-3	VALVE, SHUTOFF
28	101-389025-5	VALVE, SHUTOFF
28	101-920090-	FUEL CELL
28	109-389002-3	VALVE, SHUTOFF
28	109-389002-7	VALVE, SHUTOFF
28	18-380011-1	INDICATOR, FUEL QUANTITY
28	19B434	INDICATOR, FUEL QUANTITY
28	1C12-11D2-12	PUMP,PUMP, TRANSFERFUEL (BOOST)
28	267-901-003	INDICATOR, FUEL QUANTITY
28	300-903-006	INDICATOR, FUEL QUANTITY
28	318-65-D1	TRANSMITTER, FUEL FLOW
28	424-3	VALVE, SHUTOFF
28	50-380177-5	PUMP, FUEL (BOOST)
28	50-389029-	FUEL CELL
28	50-389031	INDICATOR, FUEL QUANTITY
28	50-389034-	FUEL CELL
28	50-389035	FUEL CELL
28	50-389053	PUMP, FUEL
28	50-389053-5	PUMP, FUEL
28	50-389094-5	PUMP, TRANSFER
28	50-389095	VALVE, CROSSFEED

CHAPTER	PART NUMBER	DESCRIPTION
28	50-500054-5	SWITCH, XFR PUMP WARNING
28	50-920101-	FUEL CELL
28	50-921552-	FUEL CELL
28	50-921554-	FUEL CELL
28	56881-2	PUMP, TRANSFER
28	81-101-1	INDICATOR, FUEL QUANTITY
28	81-101-3	INDICATOR, FUEL QUANTITY
28	81-175-2	INDICATOR, FUEL QUANTITY
28	90-920028-1	PUMP, FUEL
28	9133-25-B1	TRANSMITTER, FUEL FLOW
28	99-380000-	FUEL CELL
28	99-389005-1	PROBE, FUEL QUANTITY
28	AV16B1700B	VALVE, SHUTOFF
28	AV16B2070B1	VALVE, SHUTOFF
28	AV1B1602	VALVE, CROSSFEED
28	EM424-3	VALVE, SHUTOFF
28	EM424-4	VALVE, SHUTOFF
28	EM424-8	VALVE, SHUTOFF
28	NCA6301-1000	VALVE, MOTIVE FLOW

Chapter 30 Ice & Rain Protection

CHAPTER	PART NUMBER	DESCRIPTION
30	3022954	BLEED VALVE
30	100-324042-	PITOT, MAST ASSEMBLY
30	100-364295-3	CONTROLLER, W/S TEMP.
30	101-364584-1	PC BOARD, DEICER
30	101-381000-9	VALVE, BLEED AIR SHUTOFF
30	101-381011-1	VALVE, BLEED AIR SHUTOFF
30	101-381011-11	VALVE, BLEED AIR SHUTOFF
30	101-381011-5	VALVE, BLEED AIR SHUTOFF
30	101-381011-9	VALVE, BLEED AIR SHUTOFF
30	101-381012-3	VALVE, SHUTOFF
30	101-381012-5	VALVE
30	101-384025-	WINDSHIELD, HEATED
30	101-384144-1	VALVE, DISTRIBUTION
30	101-384165-1	MOTOR, W/S WIPER
30	101-389006-11	ACTUATOR, ICE VANE
30	101-389006-3	ACTUATOR, ICE VANE
30	101-389006-7	ACTUATOR, ICE VANE
30	101-910024-1	LOWER COWL ASSEMBLY
30	114-381002-3	VALVE, DEICE SHUTOFF
30	114-384039-21	ACTUATOR, ICE VANE
30	114-389039-23	ACTUATOR, ICE VANE
30	114-389039-5	ACTUATOR, ICE VANE
30	1532-11D	VALVE, DISTRIBUTION
30	1532-3	VALVE, DISTRIBUTION
30	1532-3A	VALVE, DISTRIBUTION
30	1532-3B	VALVE, DISTRIBUTION
30	1532-3C	VALVE, DISTRIBUTION
30	2H3-11	VALVE, VAC REGULATOR
30	38E59-4B	REGULATOR
30	38E85-2B	REGULATOR

CHAPTER	PART NUMBER	DESCRIPTION
30	38E97-2A	VALVE, DISTRIBUTION
30	3E1150-10	TIMER, DEICE
30	3E1150-12	TIMER, DEICE
30	3E1150-3	TIMER, DEICE
30	3E1150-7	TIMER, DEICE
30	3E1964-3	TIMER, DEICE
30	3E2090-1	BRUSH, MODULAR
30	3E2092-2	LEAD
30	4706-20	VALVE, SHUTOFF
30	4706-21	VALVE, SHUTOFF
30	4706-22	VALVE, SHUTOFF
30	4706-23	VALVE, SHUTOFF
30	4706-24	VALVE, SHUTOFF
30	4706-4	VALVE, SHUTOFF
30	4706-5A	VALVE, SHUTOFF
30	4711-5	VALVE, SHUTOFF
30	4E1188-3	PROP, DEICE BOOT
30	4E1188-5	PROP, DEICE BOOT
30	4E1555-	SLIP RING
30	4E2200-10	PROP, DEICE BOOT
30	50-380070-	CONVERTER, W/S WIPER
30	50-380071	MOTOR, W/S WIPER
30	50-384040-3	PITOT, TUBE
30	50-384040-5	PITOT, TUBE
30	50-384082-1	W/S WIPER BLADES
30	50-910274	LOWER COWL
30	8529M2	ACTUATOR, ICE VANE
30	90-380000-3	REGULATOR, PRESSURE
30	B40245-50	PROP, DEICE BOOT
30	EM418	ACTUATOR, ICE VANE
30	EM450-4	ACTUATOR, ICE VANE
30	EM450-5	ACTUATOR, ICE VANE
30	RA1288-3	PROP, DEICE BOOT
30	RA1288-5	PROP, DEICE BOOT
30	RA1543-	BRUSH
30	RA1989-2	LEAD
30	RA1989-3	LEAD
30	RA2111U	BRUSH, MODULAR
30	RA2111U-ROD	BRUSH, MODULAR W/ROD
30	RA2144-1	BRUSH, MODULE ASSEMBLY
30	RA2190-1	BRUSH, MODULE ASSEMBLY
30	RA2192-2	LEAD
30	RA2192-4	LEAD
30	RA2192-6	LEAD
30	RA2252-4RA2469-2	LEADPROP, DEICE BOOT
30	SYLC50298-1	ACTUATOR, ICE VANE
30	SYLC50298-3	ACTUATOR, ICE VANE
30	XW20173-M1	MOTOR, W/S WIPER
30	XW20345	CONVERTER, W/S WIPER
30	071-50001-8102	TCAS ANTENNA
30	622-8973-001	ANTENNA
30	622-9301-003	RTA-842
30	622-9302-003	RADAR RT/ANTENNA
30	MI585350-5	RADAR

Chapter 31 Instruments

CHAPTER	PART NUMBER	DESCRIPTION
31	521216	INDICATOR, OIL PRESS/TEMP.
31	521372	INDICATOR, OIL PRESS./TEMP.
31	521944	INDICATOR, ITT
31	522293	INDICATOR, ITT
31	522325	INDICATOR, ITT
31	562287	DC LOADMETER
31	100-0049-03	INDICATOR, TACH
31	100-384042-1	AMMETER, PROP
31	100-384043-9	INDICATOR, AIRSPEED
31	100-384048-17	INDICATOR, TORQUE
31	100-384048-3	INDICATOR, TORQUE
31	100-384048-5	INDICATOR, TORQUE
31	100-384050-5	INDICATOR, OIL PRESS
31	100-384054-1	INDICATOR, VERTICAL SPEED
31	100-384058-3	INDICATOR, OIL PRESS/TEMP.
31	100-384073-1	INDICATOR, FUEL FLOW
31	100-384078-1	INDICATOR, TURN & BANK
31	100-384085-1	DC VOLTMETER
31	100-384095-1	METER, AC VOLT, FREQ.
31	100-384101-5	INDICATOR
31	100-384117-3	INDICATOR, OIL PRESS/TEMP.
31	100-384117-7	INDICATOR, OIL PRESS/TEMP.
31	100-384117-9	INDICATOR, OIL PRESS/TEMP.
31	101-380030-1	GYRO, DIRECTIONAL
31	101-380030-9	INDICATOR, TURN & BANK
31	101-380031-1	INDICATOR, TURN & BANK
31	101-380037-1	GYRO, HORIZON
31	101-380080-3	GYRO, HORIZON
31	101-384008-3	INDICATOR, TORQUE
31	101-384009-1	INDICATOR, FUEL FLOW
31	101-384016-5	INDICATOR, OIL PRESS/TEMP.
31	101-384029-1	INDICATOR, FLAP POSITION
31	101-384030-3	INDICATOR, AIRSPEED
31	101-384074-3	INDICATOR, AIRSPEED
31	101-384074-7	INDICATOR, AIRSPEED, POS/NEG
31	101-384074-9	INDICATOR, FLAP POSITION
31	101-384078-1	METER, AC
31	101-384092-1	CLOCK
31	101-384101-3	INDICATOR, FLAP POSITION
31	101-384103-3	INDICATOR, AIRSPEED
31	101-384106-1	METER, VOLT/LOAD
31	101-384106-3	DC LOADMETER
31	101-384106-5	DC LOADMETER
31	101-384106-7	DC LOADMETER
31	101-384106-9	DC LOADMETER
31	101-384107-1	METER, AC VOLT, FREQ.
31	101-384107-3	METER, VOLT
31	101-384112-1	INDICATOR
31	101-384120-5	GYRO, HORIZON (AC)
31	101-384120-7	GYRO, HORIZON (AC)

CHAPTER	PART NUMBER	DESCRIPTION
31	101-384122-7	INDICATOR, OIL PRESS ./TEMP.
31	101-384137-5	CONTROL, LANDING GEAR
31	101-384150-7	INDICATOR, FUEL QUANTITY
31	101-384151-5	INDICATOR, FUEL QUANTITY
31	101-384155-7	INDICATOR, TACH
31	101-384159-7	INDICATOR, TACH
31	101-500053-1	INDICATOR, TURN & SLIP
31	102-380001-37	INDICATOR, AIRSPEED
31	102-380004-1	INDICATOR, FUEL FLOW
31	102-380007-1	INDICATOR, FUEL FLOW
31	102-380011-23	INDICATOR, OIL PRESS/TEMP.
31	102-380011-25	INDICATOR, OIL PRESS/TEMP.
31	102-380014-3	INDICATOR, OIL PRESS/TEMP.
31	109-384001-1	LOADMETER
31	114-380004-7	INDICATOR, ITT
31	114-380006-5	INDICATOR, PROP. TACH
31	114-380007-5	INDICATOR, TACH
31	114-380008-1	INDICATOR, FUEL FLOW
31	114-380009-3	INDICATOR, OIL PRESS/TEMP.
31	114-380009-5	INDICATOR, OIL PRESS./TEMP.
31	114-380011-3	INDICATOR, TURN & BANK
31	114-380012-3	INDICATOR, AIRSPEED
31	114-380013-1	GYRO, HORIZON
31	114-380015-1	INDICATOR, PROP. SYNC.
31	114-380017-5	INDICATOR, CABIN DIFF
31	114-380018-1	INDICATOR, CABIN CLIMB
31	114-380019-1	INDICATOR, FLAP POSITION
31	114-380020-1	INDICATOR, CABIN AIRTEMP
31	114-380021-1	INDICATOR, OXYGEN
31	114-380026-3	GYRO SUCTION GAUGE
31	114-380027-5	INDICATOR, PRESSURE
31	114-380033-1	METER, AC VOLT
31	114-380034-9	INDICATOR, FUEL QUANTITY
31	114-380035-3	INDICATOR, VERTICAL SPEED
31	115-384012-3	INDICATOR, OIL PRESS/TEMP.
31	115-384022-1	INDICATOR, PROP. TACH
31	115-384023	INDICATOR, FUEL FLOW
31	12B201-11	AMMETER, PROP
31	1440-03	CABLE
31	1441-03	INDICATOR, AIRSPEED
31	1510-03	INDICATOR, AIRSPEED
31	152C208L	INDICATOR, ITT
31	152C208M	INDICATOR, ITT
31	152C208T	INDICATOR, ITT
31	152C208U	INDICATOR, ITT
31	152LC208H	INDICATOR, ITT
31	19-20-247	INDICATOR, FLAP POSITION
31	1U367-301-1	GYRO, HORIZON
31	200DC	GYRO, DIRECTIONAL (ELECTRIC)
31	20B380-1	INDICATOR, TURN & BANK
31	25510B25B8A3	INDICATOR, FUEL FLOW
31	267-917-001	INDICATOR, FUEL FLOW
31	267-978-001	INDICATOR, FUEL FLOW

CHAPTER	PART NUMBER	DESCRIPTION
31	300-903-006	INDICATOR, FUEL QUANTITY
31	30B371-5	INDICATOR, TACH
31	329T-1	INDICATOR, TURN & SLIP
31	3571211-9009	INDICATOR, FUEL FLOW
31	3571212-0053	INDICATOR, FUEL FLOW
31	3940231-9004	INDICATOR, TACH
31	3941231-9002	INDICATOR, TACH
31	3941233-9006	INDICATOR, TACH
31	3941233-9007	INDICATOR, TACH
31	4000B-10	GYRO, AIR DIRECTIONAL
31	4000B-28	GYRO, HORIZON
31	50-380023-1	INDICATOR, TURN & BANK
31	50-380024	INDICATOR, TURN & BANK
31	50-380034-3	INDICATOR, TACH
31	50-380035-5	INDICATOR, TACH
31	50-380045	INDICATOR, CABIN CLIMB
31	50-380046-11	ALTIMETER, CABIN
31	50-380046-17	ALTIMETER, CABIN
31	50-380046-19	ALTIMETER, CABIN
31	50-380046-3	ALTIMETER ILR, CABIN
31	50-380067	DC LOADMETER
31	50-380069	ALTIMETER
31	50-380105-1	INDICATOR, PNEU. PRESS.
31	50-384073	INDICATOR, VERTICAL SPEED
31	50-384110	INDICATOR, TURN & BANK
31	50-384162	INDICATOR, AIRSPEED
31	50-384202-3	GYRO, DIRECTIONAL
31	50-384203	GYRO, DIRECTIONAL
31	50-384204	GYRO, DIRECTIONAL
31	50-384205	GYRO, DIRECTIONAL
31	50-389091-	INDICATOR, PROP SYNC.
31	50-389102-1	INDICATOR, ITT
31	50-389102-11	INDICATOR, ITT
31	50-389102-19	INDICATOR, ITT
31	5000B-10	GYRO, HORIZON (AIR)
31	505-0002-904	GYRO, DIR. (ELECTRIC)
31	509-0003-901	INDICATOR, TURN & BANK
31	522-079	INDICATOR, OIL PRESS/TEMP.
31	562-898	METER, VOLT/LOAD
31	562-939	LOADMETER
31	562-974	DC LOADMETER
31	562-982	INDICATOR, OIL PRESS/TEMP.
31	563-100	INDICATOR, OIL PRESS/TEMP.
31	563-110	DC LOADMETER
31	563-124	DC LOADMETER
31	563-266	INDICATOR, OIL PRESS/TEMP.
31	570-518	METER, AC
31	570-529	METER, AC VOLT, FREQ.
31	570-531	METER, VOLT
31	570-536	METER, AC VOLT C637
31	5709-1006	INDICATOR, FUEL FLOW
31	571-25005-012	ALTIMETER, ENCODING
31	58-380069-5	ALTIMETER

CHAPTER	PART NUMBER	DESCRIPTION
31	68820-1121	INDICATOR, OIL PRESS/TEMP.
31	7040B	INDICATOR, VERTICAL SPEED
31	78035-11109	INDICATOR, OIL PRESS/TEMP.
31	78035-11116	INDICATOR, OIL PRESS/TEMP.
31	8030B62	INDICATOR, AIRSPEED
31	81-101-1	INDICATOR, FUEL QUANTITY
31	81-101-3	INDICATOR, FUEL QUANTITY
31	81-175-2	INDICATOR, FUEL QUANTITY
31	86000-0177	CLOCK
31	90-380009-2	INDICATOR, FUEL FLOW
31	90-384026-11	INDICATOR,
31	90-384026-15	INDICATOR,
31	90-384026-23	INDICATOR, ITT
31	90-384026-25	INDICATOR,
31	90-384026-27	INDICATOR,
31	90-384026-29	INDICATOR,
31	90-384026-3	INDICATOR, ITT
31	90-384026-31	INDICATOR, ITT
31	90-384028-5	INDICATOR, PROP. TACH
31	91-380012-3	INDICATOR, TORQUE
31	91-380018-1	INDICATOR, TURN & BANK
31	91-380019-1	INDICATOR, TURN & BANK
31	97-384009-1	INDICATOR, OIL PRESSURE
31	97-384009-3	INDICATOR, OIL PRESSURE
31	99-384030-5	INDICATOR, TORQUE
31	99-384039	ALTIMETER
31	A1050	INDICATOR, TURN & BANK
31	A4503M9-1	CONTROL, LANDING GEAR
31	A4503M9-3	CONTROL, LANDING GEAR
31	A4503M9-5	CONTROL, LANDING GEAR
31	AM10465-3	INDICATOR, OIL PRESS/TEMP.
31	ANS-85	INDICATOR, TURN & BANK
31	AT4220A5	CLOCK, DIGITAL
31	AW2829AS05	INDICATOR, AIRSPEED
31	B365-5	INDICATOR, PROP. TACH
31	B366-3	INDICATOR, TACH
31	B367-1	INDICATOR, PROP. TACH
31	B381	INDICATOR, TURN & BANK
31	DSF989-3	INDICATOR, FUEL QUANTITY
31	LC-2A-5	CLOCK, DIGITAL
31	MD-105-1	INDICATOR, PNEU. PRESS.
31	MD-106-5	DC LOADMETER
31	066-01146-0101	TCAS II PROCESSOR
31	066-01146-1111	TCAS II PROCESSOR (SW7)
31	066-01146-1211	ACASII PROCESSOR (SW7 & HIRF)
31	066-01171-1001	TCAS UNIT
31	066-01171-1704	TCAS/VS INDICATOR
31	066-01171-2304	INDICATOR
31	066-01171-2704	TCAS/VS INDICATOR
31	066-01171-2804	TCAS/VS INDICATOR
31	066-3060-00	KNI582
31	2100-1020-00	SOLID STATE COCKPIT VOICE RECORDER
31	2100-1020-02	SS COCKPIT VOICE REC.



CHAPTER	PART NUMBER	DESCRIPTION
31	622-0555-003	INDICATOR
31	622-1204-003	RADIO ALTIMETER INDICATOR
31	622-2937-004	RADIO ALTIMETER INDICATOR
31	622-4160-015	DRI-55
31	622-4394-001	CONTROLLER
31	622-4938-007	RMI INDICATOR
31	622-6198-012	HPU-74 HSI PROCESSOR
31	622-8678-007	DISPLAY PROCESSOR
31	622-8678-008	DISPLAY PROCESSOR
31	622-8679-007	MPU-85N
31	622-8679-008	MPU-85N
31	622-8971-122	ACAS II PROCESSOR (SW 7)
31	622-9682-004	DISPLAY PROCESSOR
31	622-9683-111	DSP-84 DISPLAY SELECT PANEL
31	7000466-902	ATTITUDE DIRECTION INDICATOR
31	7000700-668	AIR DATA COMPUTER, DIGITAL
31	7000839-902	RADIO ALTIMETER INDICATOR
31	792-6091-002	HORIZONTAL SITUATION INDICATOR
31	792-6091-015	HORIZONTAL SITUATION INDICATOR
31	93-A100-80	COCKPIT VOICE RECORDER
31	S100-0080-00	RECORDER
31	S703-1000-00	FLIGHT DATA RECORDER
31	S800-2000-00	SOLID STATE FLIGHT DATA REC
31	MD-111-3	GYRO SUCTION GAUGE
31	MD-124-1	INDICATOR, CABIN AIRTEMP
31	MD-63-3	INDICATOR, OIL PRESS/TEMP.
31	PW6900027-1	INDICATOR, PROP. SYNC.
31	RC30V-10	INDICATOR, VERTICAL SPEED
31	RCA22-29	GYRO, HORIZON
31	RCA40B-03	INDICATOR, TACH
31	SR-2AD	INDICATOR, TORQUE
31	SR-2AG	INDICATOR, TORQUE
31	SR-2AJ	INDICATOR, TORQUE
31	SR-2AK	INDICATOR, TORQUE
31	SR-2AM	INDICATOR, TORQUE
31	SR-2AU	INDICATOR, TORQUE
31	SR-94L	INDICATOR, OIL PRESS
31	SRSW-94A	INDICATOR, OIL PRESS
31	SRSW-94B	INDICATOR, OIL PRESS

Chapter 32 Landing Gear

CHAPTER	PART NUMBER	DESCRIPTION
32	115386	MOTOR, LANDING GEAR
32	101-384137-5101-384137-9	SWITCH, LANDING GEAR
32	101-388002-17	ACTUATOR
32	101-388003-9	ACTUATOR
32	101-388005-	POWER PACK, HYDRAULIC
32	101-388007-3	PUMP, HAND ASSEMBLY
32	101-388008-3	VALVE, SERVICE
32	101-388009-5	ACCUMULATOR
32	101-388014-	ACTUATOR, MLG (HYDRAULIC)
32	101-388014-11	ACTUATOR, MLG (HYDRAULIC)



CHAPTER	PART NUMBER	DESCRIPTION
32	101-388014-17	ACTUATOR, MLG (HYDRAULIC)
32	101-388014-19	ACTUATOR, MLG (HYDRAULIC)
32	101-8001-111	WEAR PAD
32	101-8001-15	ROTATING DISC
32	101-8001-27	STATIONARY DISC
32	101-8001-47	WHEEL, MAIN
32	101-8002-3	BRAKE, ASSEMBLY (FLOTATION)
32	101-8002-51	WHEEL, ASSEMBLY (FLOTATION)
32	101-8015-3	WHEEL, NOSE ASSEMBLY
32	101-8027-5P	WHEEL, NOSE KIT
32	101-810011-	AXLE & PISTON (STANDARD)
32	101-810023-	KNEE, TORQUE (STANDARD)
32	101-810045-	AXLE & PISTON ASSY (FLOTATION)
32	101-810091-7	DRAG LEG, ASSY (FLOTATION)
32	101-810091-9	DRAG LEG, ASSY (STANDARD)
32	112-380022-	ACTUATOR, MLG (HYDRAULIC)
32	114-380041-9	ACTUATOR, MAIN LANDING GEAR
32	114-8008-15	PRESSURE PLATE SUB-ASSY
32	114-8008-17	STATIONARY DISC SUB-ASSY
32	114-8008-21	BACK PLATE - EXCHANGE
32	114-8008-53	WEAR PAD
32	114-8008-57	ROTATING DISC
32	115-151	INSULATOR LINING
32	115-380002-3	MOTOR, LANDING GEAR
32	115-380002-5	MOTOR, LANDING GEAR
32	115-8001-11	INSULATOR LINING
32	115-8001-15	ROTATING DISC
32	115-8001-3	BRAKE, ASSEMBLY
32	115-8001-4	WHEEL, MLG ASSEMBLY
32	115-8001-7	WEAR PAD
32	115-811020-613	GEAR BOX & MOTOR, ASSEMBLY
32	115-811020-615	GEAR BOX & MOTOR, ASSEMBLY
32	115-811020-651	GEAR BOX, LESS MOTOR
32	115-811020-653	GEAR BOX, LESS MOTOR
32	133-268	ROTATING DISC
32	133-420	ROTATING DISC
32	20700-6	PUMP
32	22400-5	VALVE
32	244-416	STATIONARY DISC
32	244-528	ROTATING DISC
32	25700-9	ACTUATOR
32	3-1209-2	WHEEL, NOSE ASSEMBLY
32	30-1	BRAKE ASSEMBLY
32	30-24	BRAKE, ASSEMBLY
32	30-75B	BRAKE, ASSEMBLY
32	30-79A	BRAKE, ASSEMBLY
32	31700-4	ACCUMULATOR
32	342-24	WEAR PAD
32	342-89	WEAR PAD
32	342-93	WEAR PAD
32	40-1	MOTOR, LANDING GEAR
32	40-3	MOTOR, LANDING GEAR
32	40-6	MOTOR, LANDING GEAR



CHAPTER	PART NUMBER	DESCRIPTION
32	40600-8	ACTUATOR, MAIN LANDING GEAR
32	444EN49-6	SWITCH, SQUAT
32	4A142-9	ACTUATOR
32	50-300010-119	BRAKE, ASSEMBLY
32	50-300011-133	WHEEL, ASSEMBLY
32	50-300011-41	WHEEL, ASSEMBLY
32	50-380114-	MOTOR, LANDING GEAR
32	50-380114-5	MOTOR, LANDING GEAR
32	50-810164-	ACTUATOR, MAIN LANDING GEAR
32	50-810200-660	MOTOR & GEAR BOX
32	50-810337-	DRAG LEG, UPPER ASSEMBLY
32	50-810338-5	HOOK
32	50-820004-3	DAMPNER, ASSEMBLY
32	50-820205-21	DRAG BRACE, ASSY (FLOTATION)
32	50-820208-5	ACTUATOR, NOSE GEAR
32	83-1000-5	SWITCH, LANDING GEAR
32	83-1000-9	SWITCH, LANDING GEAR
32	90-380001-23	MASTER CYLINDER
32	91-380002-3	MOTOR, LANDING GEAR
32	99-8003-5	BRAKE, ASSEMBLY (FLOTATION)
32	99-8003-7	MLG WHEEL, ASSY (FLOTATION)
32	99-8004-3	WHEEL, MLG ASSEMBLY
32	99-810045-	LINK
32	99-810057-651	ACTUATOR, MAIN GEAR
32	99-810057-652	ACTUATOR, MAIN GEAR
32	A4503M9-1	CONTROL, LANDING GEAR
32	A4503M9-3	CONTROL, LANDING GEAR
32	A4503M9-5	CONTROL, LANDING GEAR
32	EM40-3	MOTOR, LANDING GEAR
32	GYR6A-14	RIVET
32	GYR 6B-11	RIVET
32	GYR 6B-5	RIVET
32	MC815AS1	CONTROL, LANDING GEAR
32	RA-825	RIVET TOOL
32	RA105-002	BRAKE RIVET
32	RA66-105	BRAKE LINING
32	RA66-105-4K	BRAKE LINING KIT
32	RA66-105-8K	BRAKE LINING KIT
32	RA66-106	BRAKE LINING
32	RA66-106-8K	BRAKE LINING KIT
32	RA66-111	BRAKE LINING
32	RA66-111-4K	BRAKE LINING KIT
32	RA66-22	BRAKE LINING
32	RA66-44	BRAKE LINING
32	RAPB-001	BRAKE RIVET
32	RFS 3005	WEAR PAD
32	RFS-15	ROTATING DISC
32	RFS-151	INSULATOR LINING
32	RFS-151	INSULATOR LINING
32	RFS-27	STATIONARY DISC
32	RFS100-820017-1	BUSHING
32	RFS1005	ROTATING DISC
32	RFS101-810024-3	BUSHING



CHAPTER	PART NUMBER	DESCRIPTION
32	RFS101 -810026-1	PIN
32	RFS105739X-YN1437	BUSHING
32	RFS105739X-YR0875	BUSHING
32	RFS105740X-YA1625	BUSHING
32	RFS105740X-YN0625	BUSHING
32	RFS105740X-YN0677	BUSHING
32	RFS114-810022-1	AXLE
32	RFS114-810038-1	BUSHING
32	RFS114-810042-1	BUSHING
32	RFS114-8200112-1	BUSHING
32	RFS114-820062-1	BUSHING
32	RFS114-820112-1	BUSHING
32	RFS115-810066-3	BUSHING
32	RFS1587	ROTATING DISC
32	RFS207-111	WEAR PAD
32	RFS207-4	WEAR PAD
32	RFS207-9	WEAR PAD
32	RFS2587	ROTATING DISC
32	RFS50-810035-2	PIN
32	RFS50-810035-4	PIN
32	RFS50005	STATIONARY DISC SUB-ASSY
32	RFS5010	PRESSURE PLATE SUB-ASSY
32	RFS5015	BACK PLATE - EXCHANGE
32	RFS6A14	RIVET
32	RFS6B11	RIVET
32	RFS6B5	RIVET
32	RFS90-820010-1	BUSHING
32	RFS99-810066-1	BUSHING

Chapter 33 Lighting

CHAPTER	PART NUMBER	DESCRIPTION
33	701571	POWER SUPPLY, STROBE
33	6900080	LIGHT ASSY, FLUORESCENT
33	100-384118-	LIGHT ASSEMBLY, RECOG
33	100-384118-17	STROBE ASSEMBLY, WING TIP
33	100-384118-18	STROBE ASSEMBLY, WING TIP
33	101-360020-17	BEACON, ASSEMBLY
33	101-360020-3	BEACON, ASSEMBLY
33	101-380012-3	CONTROL, DIMMER
33	101-380012-5	CONTROL, DIMMER
33	1405-1	CONTROL, DIMMER
33	230-1	CONTROL, DIMMER
33	30-0467-5	LIGHT ASSEMBLY
33	30-1329-5	STROBE ASSEMBLY, WING TIP
33	30-1329-6	STROBE ASSEMBLY, WING TIP
33	30-1331-3	STROBE ASSEMBLY,
33	30-1467-1	STROBE ASSEMBLY,
33	40-0100-1	BEACON, ROTATING
33	40-0127-1	BEACON, ROTATING
33	40-0127-1C	BEACON, ASSEMBLY
33	50-364266-27	BEACON
33	60-1750-3	POWER SUPPLY, STROBE

CHAPTER	PART NUMBER	DESCRIPTION
33	60-2799-1	POWER SUPPLY, STROBE
33	701148-7-1	STROBE ASSEMBLY, WING
33	90029-	LIGHT ASSEMBLY, RECOG
33	A7079B24	LAMP
33	G7740-7-44	BEACON
33	G7740-A19-24	BEACON, ROTATING
33	LT-52A	POWER SUPPLY, 5V
33	PW-28S-40CC-3	POWER SUPPLIES



Chapter 34 Navigation

CHAPTER	PART NUMBER	DESCRIPTION
34	50-384040-	PITOT, TUBE HEATED
34	22702-532	ALTIMETER
34	24929-018	ALTIMETER
34	24929-412	ALTIMETER
34	24929-414	ALTIMETER
34	24929-951	ALTIMETER
34	28007-214	ALTIMETER
34	28704-D4001	ENCODING ALTIMETER
34	501-1204-01	VERTICAL GYRO
34	622-0876-201	NAV RECEIVER VIR-30A
34	622-1233-001	DME-40
34	622-2362-001	AUTOMATIC DIRECTION FINDER ADF-60A
34	622-3975-003	ENCODING ALTIMETER
34	622-3975-004	ENCODING ALTIMETER
34	622-3975-005	ENCODING ALTIMETER
34	622-3975-014	ALTIMETER
34	622-6020-021	EFD-85 ELECTRONIC FLIGHT DISPLAY
34	622-6136-002	DIRECTIONAL GYRO
34	622-6137-001	VIR32
34	622-6137-201	VIR 32 NAV RECEIVER
34	622-6197-001	ELECTRONIC FLT DISPLAY
34	622-7410-302	FLIGHT CONTROL COMPUTER
34	622-7577-099	AIR DATA COMPUTER
34	622-8051-003	ADC-85
34	622-9345-203	ELECTRONIC FLIGHT DISPLAY
34	622-9462-024	ALTERTER
34	622-9681-001	ELECTRONIC FLIGHT DISPLAY
34	622-9728-314	VSI/TRA
34	622-9735-001	SENSOR DISPLAY UNIT
34	7000622-901	VG14A GYRO
34	7014300-901	DISPLAY
34	7018879-03014	FLIGHT MANAGEMENT COMPUTER
34	777-1406-026	YAW DAMPER
34	792-6703-001	FLIGHT COMPUTER
34	8047-20	ALIMETER
34	8047-700-53	ALTIMETER
34	822-0389-433	AIR DATA COMPUTER
34	822-0760-002	VOR/ILS NAV RECEIVER
34	822-0761-001	RECEIVER, VOR/ILS
34	822-1019-313	FLIGHT CONTROL COMPUTER
34	822-1019-313	FLIGHT CONTROL COMPUTER



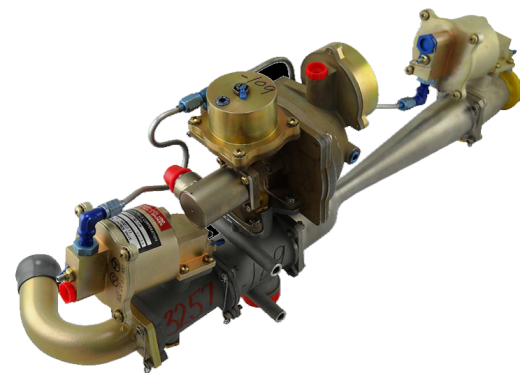
CHAPTER	PART NUMBER	DESCRIPTION
34	822-1294-002	TCAS/ACAS PROCESSOR (SW7)
34	ST3400-001	TAWS/RMI
34	ST3400-102	TERRAIN AWARENESS

Chapter 35 Oxygen

CHAPTER	PART NUMBER	DESCRIPTION
35	101-384032-	VALVE, OXYGEN SHUTOFF
35	101-384215-1	OXYGEN MASK, CREW
35	174010-08	OXYGEN MASK, CREW
35	174151M48B48A1	OXYGEN MASK, CREW
35	4402-	VALVE, OXYGEN SHUTOFF
35	801292-01	REGULATOR, OXYGEN
35	ZMR151M48B48A1	OXYGEN MASK, CREW

Chapter 36 Pneumatic

CHAPTER	PART NUMBER	DESCRIPTION
36	101-380013-11	PNEUMOSTAT
36	101-380013-13	FLOW PACK
36	101-380013-15	FLOW PACK
36	101-380013-17	FLOW PACK
36	101-380013-3	PNEUMOSTAT
36	101-380018-3	VALVE, OXYGEN SHUTOFF
36	101-380025-11	CONTROLLER, ELECTRONIC
36	101-380025-17	CONTROLLER, ELECTRONIC
36	101-380025-21	FLOW PACK, ELECTRONIC
36	101-384032-7	VALVE, OXYGEN SHUTOFF
36	101-388025-19	FLOW PACK, ELECTRONIC
36	1484-00-3	VALVE, SHUTOFF
36	1520T100-10	PNEUMOSTAT
36	1520T100-109	FLOW PACK
36	1520T100-113	FLOW PACK
36	1520T100-115	FLOW PACK
36	1520T100-14	PNEUMOSTAT
36	1520T100-2	PNEUMOSTAT
36	1H98-2	FLOW PACK, ELECTRONIC
36	97-380000-17	PNEUMOSTAT
36	97-380000-33	FLOW PACK
36	F7-51-5	CONTROLLER, ELECTRONIC



Chapter 38 Water & Waste

CHAPTER	PART NUMBER	DESCRIPTION
38	5725	PUMP, ASSEMBLY KIT
38	17000-102	PUMP, ASSEMBLY
38	17000-382	PUMP, ASSEMBLY

Chapter 39 Electrical Panels, Parts and Instruments

CHAPTER	PART NUMBER	DESCRIPTION
39	100-340485-5	PC BOARD
39	100-364216-13	PC BOARD
39	100-364216-15	PC BOARD

39	100-364217-7	PC BOARD
39	100-364285-1	PC BOARD
39	100-364285-11	PC BOARD
39	100-500033-1	PC BOARD
39	101-361096-1	PC BOARD
39	101-364086-5	PC BOARD
39	101-364086-7	PC BOARD
39	101-364092-25	PC BOARD
39	101-364152-13	PC BOARD
39	101-364170-11	PC BOARD
39	101-364170-15	PC BOARD
39	101-364170-21	PC BOARD
39	101-364210-1	PC BOARD
39	101-364210-15	PC BOARD
39	101-364210-17	PC BOARD
39	101-364326-3	PC BOARD
39	101-364328-7	PC BOARD
39	101-364553-1	PC BOARD
39	101-364572-15	PC BOARD
39	101-364572-21	PC BOARD
39	101-364572-3	PC BOARD
39	101-364572-5	PC BOARD
39	101-364578-1	PC BOARD
39	101-364580-1	PC BOARD
39	101-364582-1	PC BOARD
39	101-364584-5	PC BOARD
39	101-364672-1	PC BOARD
39	101-364674-1	PC BOARD
39	101-364739-1	PC BOARD
39	102-364028-9	PC BOARD

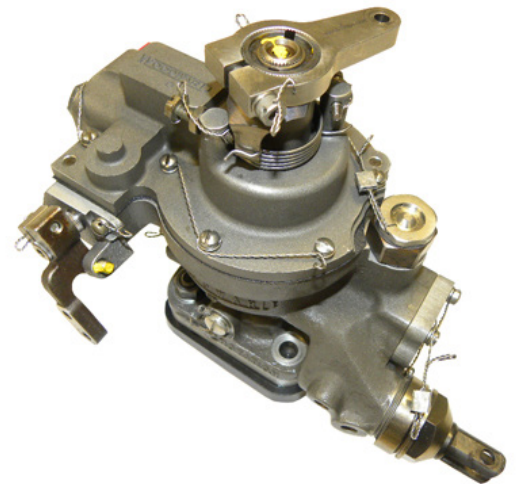
Chapter 56 Windows

CHAPTER	PART NUMBER	DESCRIPTION
56	101-384025-	WINDSHIELD, HEATED
56	101-4301 ss-	WINDOW
56	251411-	WINDOW
56	50-420066-	WINDOW

Chapter 61 Propellers

CHAPTER	PART NUMBER	DESCRIPTION
61	210492	GOVERNOR, PROP
61	210528	GOVERNOR, PROP
61	210599	GOVERNOR, PROP
61	210624	GOVERNOR, OVERSPEED
61	210631	GOVERNOR, OVERSPEED
61	210632	GOVERNOR, OVERSPEED
61	210636	GOVERNOR, OVERSPEED
61	210741	GOVERNOR, OVERSPEED
61	210954	GOVERNOR, OVERSPEED
61	213100	ACTUATOR, SYNC.
61	213181	PICKUP, MAGNETIC

CHAPTER	PART NUMBER	DESCRIPTION
61	213350	CONTROL BOX, SYNC.
61	213446	ROD, END HEX SHAFT
61	213447	ROD, END HEX SHAFT
61	213762	CONTROL BOX, SYNC.
61	HCB4MP3CM10476NSK	PROPELLER
61	213765	CONTROL BOX, SYNC.
61	213771	CONTROL BOX, SYNC.
61	213780	CONTROL BOX, SYNC.
61	213784	CONTROL BOX, SYNC.
61	3032015	GOVERNOR, PROP
61	3032016	GOVERNOR, PROP
61	3032019	GOVERNOR, PROP
61	3038457	GOVERNOR, PROP
61	3039550	GOVERNOR, PROP
61	101-389000-1	GOVERNOR,OVERSPEED
61	101-389000-3	GOVERNOR,OVERSPEED
61	101-389000-5	GOVERNOR,OVERSPEED
61	114-389020-3	GOVERNOR,OVERSPEED
61	115-389014-3	GOVERNOR,OVERSPEED
61	115-389014-5	GOVERNOR,OVERSPEED
61	1310-105	SOLENOID
61	1310-115	VALVE, DUMP
61	50-389043-1	GOVERNOR, PROP
61	50-389044-11	GOVERNOR, OVERSPEED
61	50-389077-13	GOVERNOR, OVERSPEED
61	50-389077-15	GOVERNOR, PROP
61	50-389066-3	GOVERNOR, PROP
61	5485-020	ACTUATOR, SYNC.
61	6652-920	ACTUATOR, SYNC.
61	8-060-10	SWITCH, PROX PC BOARD
61	8210-002	GOVERNOR, PROP
61	8210-003	GOVERNOR, PROP
61	8210-007	GOVERNOR, PROP
61	8210-024	GOVERNOR, PROP
61	8210-025	GOVERNOR, PROP
61	8210-193	GOVERNOR, PROP
61	8210-212	GOVERNOR, PROP
61	8210-393	GOVERNOR, PROP
61	90-389007-1	CONSTANT SPEED UNIT
61	97-389000-3	GOVERNOR,OVERSPEED
61	A210507	GOVERNOR,OVERSPEED
61	A210578	GOVERNOR, PROP
61	A210632	GOVERNOR, OVERSPEED
61	A213796	CONTROL BOX, SYNC.
61	A3026	BLOCK, CARBON
61	A3044	BLOCK, CARBON
61	B210631	GOVERNOR,OVERSPEED



Chapter 71 Power Plant

CHAPTER	PART NUMBER	DESCRIPTION
71	476284	PUMP, FUEL RETURN
71	3010820	GENERATOR, TACH
71	3014365	EXCITER

CHAPTER	PART NUMBER	DESCRIPTION
71	3015525	CONTROL UNIT, FUEL
71	3015526	CONTROL UNIT, FUEL
71	3027049	CONTROL UNIT, FUEL
71	3029567	GEAR SHAFT
71	3033474	CONTROL UNIT, FUEL
71	10-376400-5	EXCITER BOX
71	10-381550-1	EXCITER BOX
71	10-381550-4	EXCITER BOX
71	100-384049-1	TRANSMITTER, TORQUE
71	100-389004-	TRANSMITTER
71	100-389007	TRANSMITTER, OIL PRESS
71	100-389021-1	TRANSMITTER, TORQUE
71	100-389021-3	TRANSMITTER, TORQUE
71	101-384005-3	TRANSMITTER, TORQUE
71	101-389005-1	TRANSMITTER, TORQUE
71	101-389005-1	TRANSMITTER, TORQUE
71	101-389005-11	GENERATOR, STARTER
71	101-389005-3	TRANSMITTER, TORQUE
71	101-389007-1	GENERATOR, STARTER
71	101-389023-3	TRANSMITTER, OIL PRESS
71	101-389042-1	TRANSMITTER, FUEL FLOW
71	101-389042-5	TRANSMITTER, FUEL FLOW
71	101-389044-3	TRANSMITTER, TORQUE
71	101-910012-	ENGINE MOUNT
71	101-910021-	COWL, UPPER AFT
71	101-910024	COWL, LOWER FWD
71	101-910025-	COWL, UPPER FWD
71	101-950016-	EXHAUST STACK
71	114-389030-1	TRANSMITTER, FUEL FLOW
71	115-389014-3	GOVERNOR
71	115-389014-5	GOVERNOR
71	124101-1	TRANSMITTER, OIL PRESS
71	150-906-001	TRANSMITTER, FUEL FLOW
71	150-906-002	TRANSMITTER, FUEL FLOW
71	151-915-001	TRANSMITTER, FUEL FLOW
71	151-916-001	TRANSMITTER, FUEL FLOW
71	22A736	GENERATOR, TACH
71	23046-006	GENERATOR, STARTER
71	23048-016	GENERATOR, STARTER
71	23048-018	GENERATOR, STARTER
71	2524439-5	CONTROL UNIT, FUEL
71	2524440-5	CONTROL UNIT, FUEL
71	318-01010	TRANSMITTER, TORQUE
71	318-50-D1	TRANSMITTER, TORQUE
71	3244745-2	CONTROL UNIT, FUEL
71	3244755-	CONTROL UNIT, FUEL
71	3244768-	CONTROL UNIT, FUEL
71	418-06014	TRANSMITTER, TORQUE
71	50-380108	TRANSMITTER, TORQUE
71	50-389057-1	GENERATOR, TACH
71	50-580076-3	GENERATOR, STARTER
71	50-910274-	COWL, ASSEMBLY
71	66-104-3	TRANSMITTER, FUEL FLOW

Chapter 73 Engine Fuel and Control

CHAPTER	PART NUMBER	DESCRIPTION
73	3008650	GOVERNOR, FUEL TOPPING
73	3010036	NOZZLE, FUEL
73	3013635	NOZZLE, FUEL
73	3015525	CONTROL UNIT, FUEL
73	3015526	CONTROL UNIT, FUEL
73	3017957	NOZZLE, FUEL
73	3019044	PUMP, ENGINE DRIVEN
73	3019109	VALVE, START
73	3019236	PUMP, ENGINE DRIVEN
73	3019424	NOZZLE, FUEL
73	3019906	DIVIDER, FUEL FLOW
73	3027049	CONTROL UNIT, FUEL
73	3031971	NOZZLE, FUEL
73	6655567	FILTER, FUEL
73	025323-101-02	PUMP, ENGINE DRIVEN
73	025323-101-03	PUMP, ENGINE DRIVEN
73	025323-300-02	PUMP, ENGINE DRIVEN
73	025323-300-03	PUMP, ENGINE DRIVEN

Chapter 74 Ignition

CHAPTER	PART NUMBER	DESCRIPTION
74	3010201	IGNITION, LEAD
74	3011871	IGNITION, LEAD
74	3014054	IGNITER
74	3014365	EXCITER BOX
74	3027792	IGNITION, LEAD
74	3027987	IGNITION, LEAD
74	3029109	IGNITION, LEAD
74	3034891	FUEL NOZZLE
74	10-378400-5	EXCITER BOX
74	10-381550-1	EXCITER BOX
74	10-381550-4	EXCITER BOX
74	10-395427-5	IGNITION, LEAD
74	10-395427-8	IGNITION, LEAD
74	369876-24	IGNITION, LEAD
74	369876-8	IGNITION, LEAD
74	369949-3	IGNITER
74	50192A	IGNITION, LEAD
74	50221-24	IGNITION, LEAD
74	50221-8	IGNITION, LEAD
74	50383E	IGNITION, LEAD
74	50383S	IGNITION, LEAD
74	AGF2-6	IGNITER
74	CH31547C	IGNITER
74	CH34055	IGNITER

Chapter 75 Engine Air

CHAPTER	PART NUMBER	DESCRIPTION
75	3022954-	VALVE, BLEED
75	3027249-	VALVE, BLEED
75	3027427-	VALVE, BLEED
75	3027631-	VALVE, BLEED
75	3029174-	VALVE, BLEED
75	3100829-	VALVE, BLEED
75	3100922-	VALVE, BLEED
75	3100923-	VALVE, BLEED
75	3103174-04	VALVE, BLEED

Chapter 77 Engine Indicating

CHAPTER	PART NUMBER	DESCRIPTION
77	3010820	GENERATOR, TACH
77	3021390	T5 HARNESS
77	3031566	T5 HARNESS
77	2CM9AAH4	GENERATOR, TACH
77	32164-000	GENERATOR, TACH
77	50-389057-1	GENERATOR, TACH
77	A5278110302	GENERATOR, TACH
77	EM8001	GENERATOR, TACH
77	H60-000	GENERATOR, TACH
77	MS25038-4	GENERATOR, TACH
77	TC18100J	T5 HARNESS
77	TG255-002	GENERATOR, TACH

Chapter 79 Engine Oil

CHAPTER	PART NUMBER	DESCRIPTION
79	10552	HEATER, OIL/FUEL
79	10585	HEATER, OIL/FUEL
79	3019373	DETECTOR, CHIP
79	3029199	DETECTOR, CHIP
79	3030364	DETECTOR, CHIP
79	3030643	HEATER, OIL/FUEL
79	3032707	HEATER, OIL/FUEL
79	3033293	HEATER, OIL/FUEL
79	3034081	DETECTOR, CHIP
79	3035063	HEATER, OIL/FUEL
79	6533839	COOLER, OIL
79	8541001	COOLER, OIL
79	8543945	COOLER, OIL
79	8546944	COOLER, OIL
79	100-389015-1	COOLER, OIL
79	101-381010-1	COOLER, OIL
79	101-364026-1	COOLER, OIL
79	101-364026-3	COOLER, OIL
79	101-389015-5	COOLER, OIL
79	10552-	HEATER, OIL/FUEL
79	10552B	HEATER, OIL/FUEL
79	10552C	HEATER, OIL/FUEL

CHAPTER	PART NUMBER	DESCRIPTION
79	10552D	HEATER, OIL/FUEL
79	10552E	HEATER, OIL/FUEL
79	10662D	COOLER, OIL
79	115-384002	COOLER, OIL
79	16153-60AA	COOLER, OIL
79	316-100	TRANSMITTER, OIL PRESS
79	50-389048-1	COOLER, OIL
79	50-389048-11	COOLER, OIL
79	50-389048-3	COOLER, OIL
79	5D700-000	COOLER, OIL
79	5D700-005	COOLER, OIL
79	A16A	COOLER, OIL
79	MS28034-3	BULB, OIL TEMP.

Chapter 91 Printed Circuit Boards

CHAPTER	PART NUMBER	DESCRIPTION
91	100-364179-1	CONTROL, A/C
91	100-364217-13	ANNUNCIATOR, CONTROL
91	101-361015-1	FUSE PANEL, A/C
91	101-361161-1	CONTROL, A/C
91	101-364086-7	FUELTRANSFER
91	101-364092-15	TIME DELAY
91	101-364092-21	DELAY, TIME
91	101-364170-17	ACTUATOR, ICE VANE
91	101-364170-9	ACTUATOR, ICE VANE
91	101-364180-7	BATT CHARGE MONITOR
91	101-364210-11	BATT CHARGE MONITOR
91	101-364326-1	ANNUNCIATOR, CONTROL
91	101-364326-9	ANNUNCIATOR, CONTROL
91	101-364328-1	ANNUNCIATOR, FAULT DETECT
91	101-364572-17	ICE VANE, N1
91	101-364580-15	FAULT DETECTION
91	101-364564-1	AMBIENT AIR, BRAKE DEICE
91	101-364712-1	ICE VANE, N1 SPEED
91	101-364715-1	BUSS TIE
91	109-361016-	OVERVOLT SENSOR
91	112-364032-1	FIRE EXTINGUISHER
91	50-364322-	ANNUNCIATOR, CONTROL
91	90-364035-7	ANNUNCIATOR, CONTROL
91	91-360011-1	PANEL, RELAY
91	99-364205-1	PANEL, RELAY
91	99-364207-1	BATT CHARGE MONITOR
91	99-364210-1	CONTROL, FLAP
91	99-364212-1	CAUTION ADVISORY
91	99-364214-1	CONTROL, WARNING
91	99-364228-1	TIME DELAY
91	99-364230-1	CONTROL, AIRCOND

BEECHCRAFT - KING AIR

NUMERICAL LISTING

PART NUMBER	CHAPTER	DESCRIPTION
5725	25	PUMP, ASSEMBLY KIT
5725	38	PUMP, ASSEMBLY KIT
10552	79	HEATER, OIL/FUEL
10585	79	HEATER, OIL/FUEL
15330	23	STATIC WICK
15340	23	STATIC WICK
15347	23	STATIC WICK, BASE
15348	23	STATIC WICK, EPOXY KIT
15401	23	STATIC WICK, BASE
20051	24	STATIC INVERTER
20139	24	STATIC INVERTER
71154	28	PUMP, FUEL
72443	28	PUMP, FUEL
115386	32	MOTOR, LANDING GEAR
126106	21	SUPERCHARGER
210492	61	GOVERNOR, PROP
210528	61	GOVERNOR, PROP
210599	61	GOVERNOR, PROP
210624	61	GOVERNOR, OVERSPEED
210631	61	GOVERNOR,OVERSPEED
210632	61	GOVERNOR,OVERSPEED
210636	61	GOVERNOR,OVERSPEED
210741	61	GOVERNOR,OVERSPEED
210954	61	GOVERNOR,OVERSPEED
213100	61	ACTUATOR, SYNC.
213181	61	PICKUP, MAGNETIC
213350	61	CONTROL BOX, SYNC.
213446	61	ROD, END HEX SHAFT
213447	61	ROD, END HEX SHAFT
213762	61	CONTROL BOX, SYNC.
213765	61	CONTROL BOX, SYNC.
213771	61	CONTROL BOX, SYNC.
213780	61	CONTROL BOX, SYNC.
213784	61	CONTROL BOX, SYNC.
476284	71	PUMP, FUEL RETURN
521216	31	INDICATOR, OIL PRESS/TEMP.
521372	31	INDICATOR, OIL PRESS./TEMP.
521944	31	INDICATOR, ITT
522293	31	INDICATOR, ITT
522325	31	INDICATOR, ITT
562287	31	DC LOADMETER
701571	33	POWER SUPPLY, STROBE
1520614	21	VALVE, SHUT OFF
1523258	21	RECEIVER/DRYER
3008650	73	GOVERNOR, FUEL TOPPING
3010036	73	NOZZLE, FUEL
3010201	74	IGNITION, LEAD
3010820	71	GENERATOR, TACH
3010820	77	GENERATOR, TACH
3011871	74	IGNITION, LEAD
3013635	73	NOZZLE, FUEL
3014054	74	IGNITER
3014365	71	EXCITER

PART NUMBER	CHAPTER	DESCRIPTION
3014365	74	EXCITER BOX
3015525	71	CONTROL UNIT, FUEL
3015525	73	CONTROL UNIT, FUEL
3015526	71	CONTROL UNIT, FUEL
3015526	73	CONTROL UNIT, FUEL
3017957	73	NOZZLE, FUEL
3019044	73	PUMP, ENGINE DRIVEN
3019109	73	VALVE, START
3019236	73	PUMP, ENGINE DRIVEN
3019373	79	DETECTOR, CHIP
3019424	73	NOZZLE, FUEL
3019906	73	DIVIDER, FUEL FLOW
3021390	77	T5 HARNESS
3022954	30	BLEED VALVE
3027049	71	CONTROL UNIT, FUEL
3027049	73	CONTROL UNIT, FUEL
3027792	74	IGNITION, LEAD
3027987	74	IGNITION, LEAD
3029109	74	IGNITION, LEAD
3029199	79	DETECTOR, CHIP
3029567	71	GEAR SHAFT
3030364	79	DETECTOR, CHIP
3030643	79	HEATER, OIL/FUEL
3031566	77	T5 HARNESS
3031971	73	NOZZLE, FUEL
3032015	61	GOVERNOR, PROP
3032016	61	GOVERNOR, PROP
3032019	61	GOVERNOR, PROP
3032707	79	HEATER, OIL/FUEL
3033293	79	HEATER, OIL/FUEL
3033474	71	CONTROL UNIT, FUEL
3034081	79	DETECTOR, CHIP
3034891	74	FUEL NOZZLE
3035063	79	HEATER, OIL/FUEL
3038457	61	GOVERNOR, PROP
3039550	61	GOVERNOR, PROP
6533839	79	COOLER, OIL
6655567	73	FILTER, FUEL
6900080	33	LIGHT ASSY, FLUORESCENT
8540088	21	COIL, CONDENSOR
8541001	79	COOLER, OIL
8541010	21	HEAT EXCHANGER
8543945	79	COOLER, OIL
8544078	21	EVAPORATOR
8546944	79	COOLER, OIL
30301102	26	BOTTLE, FIRE EXTINGUISHER
002-920033-	28	FUEL CELL
002-920034-100-380006	28	TRANSMITTER,FUEL CELL FUEL QTY.
0113-9	21	BLOWER, COMB AIR
025323-101-02	73	PUMP, ENGINE DRIVEN
025323-101-03	73	PUMP, ENGINE DRIVEN
025323-300-02	73	PUMP, ENGINE DRIVEN
025323-300-03	73	PUMP, ENGINE DRIVEN

PART NUMBER	CHAPTER	DESCRIPTION
064-1015-01	23	HF RT W/SELCAL
064-1017-01	23	HF POWER AMPLIFIER / COUPLER
066-01143-0601	23	TRANSPONDER
066-01146-0101	31	TCAS II PROCESSOR
066-01146-1111	31	TCAS II PROCESSOR (SW7)
066-01146-1211	31	ACASII PROCESSOR (SW7 & HIRF)
066-01171-1001	31	TCAS UNIT
066-01171-1704	31	TCAS/VS INDICATOR
066-01171-2304	31	INDICATOR
066-01171-2704	31	TCAS/VS INDICATOR
066-01171-2804	31	TCAS/VS INDICATOR
066-3060-00	31	KNI582
071-50001-8102	30	TCAS ANTENNA
07E02-1	21	HEATER
10-376400-5	71	EXCITER BOX
10-378400-5	74	EXCITER BOX
10-381550-1	71	EXCITER BOX
10-381550-1	74	EXCITER BOX
10-381550-4	71	EXCITER BOX
10-381550-4	74	EXCITER BOX
10-395427-5	74	IGNITION, LEAD
10-395427-8	74	IGNITION, LEAD
100-0049-03	31	INDICATOR, TACH
100-324042-	30	PITOT, MAST ASSEMBLY
100-340485-5	39	PC BOARD
100-364179-1	91	CONTROL, A/C
100-364216-13	39	PC BOARD
100-364216-15	39	PC BOARD
100-364217-13	91	ANNUNCIATOR, CONTROL
100-364217-7	39	PC BOARD
100-364285-1	39	PC BOARD
100-364285-11	39	PC BOARD
100-364295-3	30	CONTROLLER, W/S TEMP.
100-380006-47	28	INDICATOR, FUEL QUANTITY
100-381000-	28	FUEL CELL
100-381001-	28	FUEL CELL
100-381002-	28	FUEL CELL
100-384040	27	FLAP, MOTOR
100-384040-3	27	FLAP, MOTOR
100-384042-1	31	AMMETER, PROP
100-384043-9	31	INDICATOR, AIRSPEED
100-384048-17	31	INDICATOR, TORQUE
100-384048-3	31	INDICATOR, TORQUE
100-384048-5	31	INDICATOR, TORQUE
100-384049-1	71	TRANSMITTER, TORQUE
100-384050-5	31	INDICATOR, OIL PRESS
100-384054-1	31	INDICATOR, VERTICAL SPEED
100-384058-3	31	INDICATOR, OIL PRESS/TEMP.
100-384072-5	21	MOTOR
100-384073-1	31	INDICATOR, FUEL FLOW
100-384078-1	31	INDICATOR, TURN & BANK
100-384085-1	31	DC VOLTMETER
100-384092-1	27	CLOCK, 24 HOUR

PART NUMBER	CHAPTER	DESCRIPTION
100-384095-1	31	METER, AC VOLT, FREQ.
100-384101-5	31	INDICATOR
100-384117-3	31	INDICATOR, OIL PRESS/TEMP.
100-384117-7	31	INDICATOR, OIL PRESS/TEMP.
100-384117-9	31	INDICATOR, OIL PRESS/TEMP.
100-384118-	33	LIGHT ASSEMBLY, RECOG
100-384118-17	33	STROBE ASSEMBLY, WING TIP
100-384118-18	33	STROBE ASSEMBLY, WING TIP
100-384135-1	21	MOTOR
100-389004-	71	TRANSMITTER
100-389005-11	24	GENERATOR, STARTER
100-389007	71	TRANSMITTER, OIL PRESS
100-389015-1	79	COOLER, OIL
100-389020-1	28	VALVE, MOTIVE FLOW
100-389021-1	71	TRANSMITTER, TORQUE
100-389021-3	71	TRANSMITTER, TORQUE
100-500033-1	39	PC BOARD
100-524073-1	27	FLAP, MOTOR & GEARBOX
100-524074-1	27	FLAP, GEARBOX
10011A	21	COIL, CONDENSOR
101-130003-1	27	AILERON, LH
101-130003-609	27	AILERON, RH
101-130003-610	27	AILERON
101-160001-17	27	FLAP
101-160001-18	27	FLAP
101-160001-2	27	FLAP
101-160001-20	27	FLAP
101-160001-28	27	FLAP
101-160001-31	27	PI
101-160001-7+D328	27	FLAP
101-360020-17	33	BEACON, ASSEMBLY
101-360020-3	33	BEACON, ASSEMBLY
101-361015-1	91	FUSE PANEL, A/C
101-361096-1	24	PC BOARD
101-361096-1	39	PC BOARD
101-361161-1	91	CONTROL, A/C
101-364026-1	79	COOLER, OIL
101-364026-3	79	COOLER, OIL
101-364086-5	39	PC BOARD
101-364086-7	39	PC BOARD
101-364086-7	91	FUELTRANSFER
101-364092-15	91	TIME DELAY
101-364092-21	91	DELAY, TIME
101-364092-25	39	PC BOARD
101-364152-13	39	PC BOARD
101-364170-11	39	PC BOARD
101-364170-15	39	PC BOARD
101-364170-17	91	ACTUATOR, ICE VANE
101-364170-21	39	PC BOARD
101-364170-9	91	ACTUATOR, ICE VANE
101-364180-7	91	BATT CHARGE MONITOR
101-364210-1	39	PC BOARD
101-364210-11	91	BATT CHARGE MONITOR

PART NUMBER	CHAPTER	DESCRIPTION
101-364210-15	39	PC BOARD
101-364210-17	39	PC BOARD
101-364270-1	24	GENERATOR, CONTROL
101-364270-5	24	GENERATOR, CONTROL
101-364326-1	91	ANNUNCIATOR, CONTROL
101-364326-3	39	PC BOARD
101-364326-9	91	ANNUNCIATOR, CONTROL
101-364328-1	91	ANNUNCIATOR, FAULT DETECT
101-364328-7	39	PC BOARD
101-364553-1	39	PC BOARD
101-364564-1	91	AMBIENT AIR, BRAKE DEICE
101-364572-15	39	PC BOARD
101-364572-17	91	ICE VANE, N1
101-364572-21	39	PC BOARD
101-364572-3	39	PC BOARD
101-364572-5	39	PC BOARD
101-364578-1	39	PC BOARD
101-364580-1	39	PC BOARD
101-364580-15	91	FAULT DETECTION
101-364582-1	39	PC BOARD
101-364584-1	30	PC BOARD, DEICER
101-364584-5	39	PC BOARD
101-364672-1	39	PC BOARD
101-364674-1	39	PC BOARD
101-364712-1	91	ICE VANE, N1 SPEED
101-364715-1	91	BUSS TIE
101-364739-1	39	PC BOARD
101-380005-17	27	COMPUTER, LIFT
101-380005-19	27	COMPUTER, LIFT
101-380005-23	27	COMPUTER, LIFT
101-380005-27	27	COMPUTER, LIFT
101-380005-9	27	STALL VANE
101-380007-3	24	VALVE, SHUT OFF
101-380012-3	33	CONTROL, DIMMER
101-380012-5	33	CONTROL, DIMMER
101-380013-11	21	PNEUMOSTAT
101-380013-11	36	PNEUMOSTAT
101-380013-13	21	FLOW PACK
101-380013-13	36	FLOW PACK
101-380013-15	21	FLOW PACK
101-380013-15	36	FLOW PACK
101-380013-17	21	FLOW PACK
101-380013-17	36	FLOW PACK
101-380013-3	36	PNEUMOSTAT
101-380018-3	36	VALVE, OXYGEN SHUTOFF
101-380025-11	36	CONTROLLER, ELECTRONIC
101-380025-17	21	CONTROLLER
101-380025-17	36	CONTROLLER, ELECTRONIC
101-380025-21	21	FLOW PACK, ELECTRONIC
101-380025-21	36	FLOW PACK, ELECTRONIC
101-380030-1	31	GYRO, DIRECTIONAL
101-380030-9	31	INDICATOR, TURN & BANK
101-380031-1	31	INDICATOR, TURN & BANK

PART NUMBER	CHAPTER	DESCRIPTION
101-380037-1	31	GYRO, HORIZON
101-380080-3	31	GYRO, HORIZON
101-381000-9	30	VALVE, BLEED AIR SHUTOFF
101-381002-	28	FUEL CELL
101-381010-1	21	HEAT EXCHANGER
101-381010-1	79	COOLER, OIL
101-381011-1	21	VALVE, BLEED AIR SHUTOFF
101-381011-1	30	VALVE, BLEED AIR SHUTOFF
101-381011-11	21	VALVE, BLEED AIR SHUTOFF
101-381011-11	30	VALVE, BLEED AIR SHUTOFF
101-381011-5	21	VALVE, BLEED AIR SHUTOFF
101-381011-5	30	VALVE, BLEED AIR SHUTOFF
101-381011-9	21	VALVE, BLEED AIR SHUTOFF
101-381011-9	30	VALVE, BLEED AIR SHUTOFF
101-381012-3	21	VALVE, SHUTOFF
101-381012-3	30	VALVE, SHUTOFF
101-381012-5	30	VALVE
101-384003-1	21	COIL, CONDENSOR
101-384003-5	21	COIL, CONDENSOR
101-384003-7	21	COIL, CONDENSOR
101-384004-1	21	BLOWER, ASSEMBLY
101-384004-5	21	BLOWER, ASSEMBLY
101-384004-9	21	BLOWER, ASSEMBLY
101-384005-3	71	TRANSMITTER, TORQUE
101-384008-3	31	INDICATOR, TORQUE
101-384009-1	24	INDICATOR
101-384009-1	31	INDICATOR, FUEL FLOW
101-384016-5	31	INDICATOR, OIL PRESS/TEMP.
101-384024-1	21	COIL, CONDENSOR
101-384025-	30	WINDSHIELD, HEATED
101-384025-	56	WINDSHIELD, HEATED
101-384026-7	21	BLOWER
101-384029-1	31	INDICATOR, FLAP POSITION
101-384030-3	31	INDICATOR, AIRSPEED
101-384032-	35	VALVE, OXYGEN SHUTOFF
101-384032-7	36	VALVE, OXYGEN SHUTOFF
101-384074-3	31	INDICATOR, AIRSPEED
101-384074-7	31	INDICATOR, AIRSPEED, POS/NEG
101-384074-9	31	INDICATOR, FLAP POSITION
101-384078-1	31	METER, AC
101-384079-1	21	RECEIVER/DRYER
101-384079-3	21	RECEIVER/DRYER
101-384092-1	31	CLOCK
101-384100-1	21	BLOWER, VENT
101-384101-3	31	INDICATOR, FLAP POSITION
101-384103-3	31	INDICATOR, AIRSPEED
101-384106-1	31	METER, VOLT/LOAD
101-384106-3	31	DC LOADMETER
101-384106-5	31	DC LOADMETER
101-384106-7	31	DC LOADMETER
101-384106-9	31	DC LOADMETER
101-384107-1	31	METER, AC VOLT, FREQ.
101-384107-3	31	METER, VOLT

PART NUMBER	CHAPTER	DESCRIPTION
101-384108-1	21	THERMOSTAT
101-384112-1	31	INDICATOR
101-384120-5	31	GYRO, HORIZON (AC)
101-384120-7	31	GYRO, HORIZON (AC)
101-384122-7	31	INDICATOR, OIL PRESS ./TEMP.
101-384135-3	21	BLOWER, ASSEMBLY
101-384137-5	31	CONTROL, LANDING GEAR
101-384137-5101-384137-9	32	SWITCH, LANDING GEAR
101-384144-1	30	VALVE, DISTRIBUTION
101-384150-7	28	INDICATOR, FUEL QUANTITY
101-384150-7	31	INDICATOR, FUEL QUANTITY
101-384151-3	28	INDICATOR, FUEL QUANTITY
101-384151-5	28	INDICATOR, FUEL QUANTITY
101-384151-5	31	INDICATOR, FUEL QUANTITY
101-384155-7	31	INDICATOR, TACH
101-384159-7	31	INDICATOR, TACH
101-384165-1	30	MOTOR, W/S WIPER
101-384176-1	21	BLOWER, VENT
101-384177-9	21	MOTOR, SPEED CONTROL
101-384209-1	27	FLAP, POSITION INDICATOR
101-384215-1	35	OXYGEN MASK, CREW
101-384217-1	21	VALVE
101-388002-17	32	ACTUATOR
101-388003-9	32	ACTUATOR
101-388005-	32	POWER PACK, HYDRAULIC
101-388007-3	32	PUMP, HAND ASSEMBLY
101-388008-3	32	VALVE, SERVICE
101-388009-5	32	ACCUMULATOR
101-388014-	32	ACTUATOR, MLG (HYDRAULIC)
101-388014-11	32	ACTUATOR, MLG (HYDRAULIC)
101-388014-17	32	ACTUATOR, MLG (HYDRAULIC)
101-388014-19	32	ACTUATOR, MLG (HYDRAULIC)
101-388025-19	36	FLOW PACK, ELECTRONIC
101-389000-1	61	GOVERNOR, OVERSPEED
101-389000-3	61	GOVERNOR, OVERSPEED
101-389000-5	61	GOVERNOR, OVERSPEED
101-389005-1	71	TRANSMITTER, TORQUE
101-389005-1	71	TRANSMITTER, TORQUE
101-389005-11	71	GENERATOR, STARTER
101-389005-3	71	TRANSMITTER, TORQUE
101-389006-11	30	ACTUATOR, ICE VANE
101-389006-3	30	ACTUATOR, ICE VANE
101-389006-7	30	ACTUATOR, ICE VANE
101-389007-1	24	GENERATOR, STARTER
101-389007-1	71	GENERATOR, STARTER
101-389015-5	79	COOLER, OIL
101-389023-3	71	TRANSMITTER, OIL PRESS
101-389025-1	28	VALVE, SHUTOFF
101-389025-3	28	VALVE, SHUTOFF
101-389025-5	28	VALVE, SHUTOFF
101-389042-1	71	TRANSMITTER, FUEL FLOW
101-389042-5	71	TRANSMITTER, FUEL FLOW
101-389044-3	71	TRANSMITTER, TORQUE

PART NUMBER	CHAPTER	DESCRIPTION
101-4301 ss-	56	WINDOW
101-500053-1	31	INDICATOR, TURN & SLIP
101-521016-1	27	FLAP, ACTUATOR
101-521016-2	27	FLAP, ACTUATOR
101-521039-1	27	ACTUATOR, TRIM
101-524072-1	27	ACTUATOR, TRIM
101-524079-3	27	ACTUATOR, TRIM
101-524092-1	27	ACTUATOR, TRIM
101-524973-1	27	SERVO
101-570022-11	26	SWITCH
101-610000-	27	ELEVATOR
101-8001-111	32	WEAR PAD
101-8001-15	32	ROTATING DISC
101-8001-27	32	STATIONARY DISC
101-8001-47	32	WHEEL, MAIN
101-8002-3	32	BRAKE, ASSEMBLY (FLOTATION)
101-8002-51	32	WHEEL, ASSEMBLY (FLOTATION)
101-8015-3	32	WHEEL, NOSE ASSEMBLY
101-8027-5P	32	WHEEL, NOSE KIT
101-810011-	32	AXLE & PISTON (STANDARD)
101-810023-	32	KNEE, TORQUE (STANDARD)
101-810045-	32	AXLE & PISTON ASSY (FLOTATION)
101-810091-7	32	DRAG LEG, ASSY (FLOTATION)
101-810091-9	32	DRAG LEG, ASSY (STANDARD)
101-910012-	71	ENGINE MOUNT
101-910021-	71	COWL, UPPER AFT
101-910024	71	COWL, LOWER FWD
101-910024-1	30	LOWER COWL ASSEMBLY
101-910025-	71	COWL, UPPER FWD
101-920090-	28	FUEL CELL
101-950016-	71	EXHAUST STACK
102-364028-9	39	PC BOARD
102-380001-37	31	INDICATOR, AIRSPEED
102-380004-1	31	INDICATOR, FUEL FLOW
102-380007-1	31	INDICATOR, FUEL FLOW
102-380011-23	31	INDICATOR, OIL PRESS/TEMP.
102-380011-25	31	INDICATOR, OIL PRESS/TEMP.
102-380014-3	31	INDICATOR, OIL PRESS/TEMP.
102-384026-1	21	HEATER
102-384031-1	21	BLOWER
102464-26	21	CONTROL, PRESSURIZATION
102464-36	21	CONTROL, PRESSURIZATION
103456-4	21	VALVE, OUTFLOW
103460-5	21	VALVE, OUTFLOW
103460-7	21	VALVE, OUTFLOW
103570-14	21	VALVE, OUTFLOW
103598-12	21	VALVE, OUTFLOW
103598-2	21	VALVE, OUTFLOW
103646-1	21	VALVE, OUTFLOW
103648-1	21	VALVE, OUTFLOW
103648-4	21	VALVE, OUTFLOW
103648-5	21	VALVE, OUTFLOW
103648-7	21	VALVE, OUTFLOW

PART NUMBER	CHAPTER	DESCRIPTION
10552-	79	HEATER, OIL/FUEL
10552B	79	HEATER, OIL/FUEL
10552C	79	HEATER, OIL/FUEL
10552D	79	HEATER, OIL/FUEL
10552E	79	HEATER, OIL/FUEL
10662D	79	COOLER, OIL
109-361016-	91	OVERVOLT SENSOR
109-384001-1	31	LOADMETER
109-389002-3	28	VALVE, SHUTOFF
109-389002-7	28	VALVE, SHUTOFF
112-364032-1	91	FIRE EXTINGUISHER
112-380022-	32	ACTUATOR, MLG (HYDRAULIC)
1136T100-23	27	ACTUATOR, HORZ STAB
114-380004-7	31	INDICATOR, ITT
114-380006-5	31	INDICATOR, PROP. TACH
114-380007-5	31	INDICATOR, TACH
114-380008-1	31	INDICATOR, FUEL FLOW
114-380009-3	31	INDICATOR, OIL PRESS/TEMP.
114-380009-5	31	INDICATOR, OIL PRESS./TEMP.
114-380011-3	31	INDICATOR, TURN & BANK
114-380012-3	31	INDICATOR, AIRSPEED
114-380013-1	31	GYRO, HORIZON
114-380015-1	31	INDICATOR, PROP. SYNC.
114-380017-5	31	INDICATOR, CABIN DIFF
114-380018-1	31	INDICATOR, CABIN CLIMB
114-380019-1	31	INDICATOR, FLAP POSITION
114-380020-1	31	INDICATOR, CABIN AIRTEMP
114-380021-1	31	INDICATOR, OXYGEN
114-380026-3	31	GYRO SUCTION GAUGE
114-380027-5	31	INDICATOR, PRESSURE
114-380028-1	21	BLOWER
114-380033-1	31	METER, AC VOLT
114-380034-9	31	INDICATOR, FUEL QUANTITY
114-380035-3	31	INDICATOR, VERTICAL SPEED
114-380039-1	21	VALVE, BYPASS
114-380040-5	21	SENSOR
114-380041-9	32	ACTUATOR, MAIN LANDING GEAR
114-380042-15	21	VALVE, SHUTOFF
114-380042-17	21	VALVE, SHUTOFF
114-380051-1	27	LIFT, TRANSDUCER
114-381002-3	30	VALVE, DEICE SHUTOFF
114-384039-21	30	ACTUATOR, ICE VANE
114-389020-3	61	GOVERNOR, OVERSPEED
114-389030-1	71	TRANSMITTER, FUEL FLOW
114-389039-23	30	ACTUATOR, ICE VANE
114-389039-5	30	ACTUATOR, ICE VANE
114-8008-15	32	PRESSURE PLATE SUB-ASSY
114-8008-17	32	STATIONARY DISC SUB-ASSY
114-8008-21	32	BACK PLATE - EXCHANGE
114-8008-53	32	WEAR PAD
114-8008-57	32	ROTATING DISC
115-151	32	INSULATOR LINING
115-380002-3	32	MOTOR, LANDING GEAR

PART NUMBER	CHAPTER	DESCRIPTION
115-380002-5	32	MOTOR, LANDING GEAR
115-380111-19	27	ACTUATOR, HORZ STAB
115-384001-3	21	MOTOR, FAN
115-384002	79	COOLER, OIL
115-384002-5	21	EVAPORATOR
115-384012-3	31	INDICATOR, OIL PRESS/TEMP.
115-384022-1	31	INDICATOR, PROP. TACH
115-384023	31	INDICATOR, FUEL FLOW
115-389014-3	61	GOVERNOR, OVERSPEED
115-389014-3	71	GOVERNOR
115-389014-5	61	GOVERNOR, OVERSPEED
115-389014-5	71	GOVERNOR
115-521107-605	27	ACTUATOR, AILERON TRIM
115-8001-11	32	INSULATOR LINING
115-8001-15	32	ROTATING DISC
115-8001-3	32	BRAKE, ASSEMBLY
115-8001-4	32	WHEEL, MLG ASSEMBLY
115-8001-7	32	WEAR PAD
115-811020-613	32	GEAR BOX & MOTOR, ASSEMBLY
115-811020-615	32	GEAR BOX & MOTOR, ASSEMBLY
115-811020-651	32	GEAR BOX, LESS MOTOR
115-811020-653	32	GEAR BOX, LESS MOTOR
11C30	21	IGNITION ASSEMBLY
124101-1	71	TRANSMITTER, OIL PRESS
129-380001-5	21	SENSOR
12B201-11	31	AMMETER, PROP
130346-1	21	CONTROL, PRESSURIZATION
130346-11	21	CONTROL, PRESSURIZATION
130346-12	21	CONTROL, PRESSURIZATION
130346-6	21	CONTROL, PRESSURIZATION
130346-7	21	CONTROL, PRESSURIZATION
130374-22	21	CONTROL, PRESSURIZATION
130374-29	21	CONTROL, PRESSURIZATION
13083-5	26	FIRE CARTRIDGE
1310-105	61	SOLENOID
1310-115	61	VALVE, DUMP
133-268	32	ROTATING DISC
133-420	32	ROTATING DISC
1405-1	33	CONTROL, DIMMER
1440-03	31	CABLE
1441-03	31	INDICATOR, AIRSPEED
1484-00-3	36	VALVE, SHUTOFF
150-906-001	71	TRANSMITTER, FUEL FLOW
150-906-002	71	TRANSMITTER, FUEL FLOW
151-915-001	71	TRANSMITTER, FUEL FLOW
151-916-001	71	TRANSMITTER, FUEL FLOW
1510-03	31	INDICATOR, AIRSPEED
1520T100-10	36	PNEUMOSTAT
1520T100-109	21	FLOW PACK
1520T100-109	36	FLOW PACK
1520T100-111	21	FLOW PACK
1520T100-113	21	FLOW PACK
1520T100-113	36	FLOW PACK

PART NUMBER	CHAPTER	DESCRIPTION
1520T100-115	21	FLOW PACK
1520T100-115	36	FLOW PACK
1520T100-14	21	PNEUMOSTAT
1520T100-14	36	PNEUMOSTAT
1520T100-2	21	PNEUMOSTAT
1520T100-2	36	PNEUMOSTAT
152C208L	31	INDICATOR, ITT
152C208M	31	INDICATOR, ITT
152C208T	31	INDICATOR, ITT
152C208U	31	INDICATOR, ITT
152LC208H	31	INDICATOR, ITT
1532-11D	30	VALVE, DISTRIBUTION
1532-3	30	VALVE, DISTRIBUTION
1532-3A	30	VALVE, DISTRIBUTION
1532-3B	30	VALVE, DISTRIBUTION
1532-3C	30	VALVE, DISTRIBUTION
16153-60AA	79	COOLER, OIL
17000-102	38	PUMP, ASSEMBLY
17000-382	25	PUMP
17000-382	38	PUMP, ASSEMBLY
174010-08	35	OXYGEN MASK, CREW
174151M48B48A1	35	OXYGEN MASK, CREW
18-380011-1	28	INDICATOR, FUEL QUANTITY
19-20-247	31	INDICATOR, FLAP POSITION
1900-7.4-1	27	SERVO
1936T100-1	21	RECEIVER/DRYER
19A1860	21	BLOWER
19B434	28	INDICATOR, FUEL QUANTITY
1C12-11D2-12	28	PUMP,PUMP, TRANSFERFUEL (BOOST)
1H98-2	21	FLOW PACK, ELECTRONIC
1H98-2	36	FLOW PACK, ELECTRONIC
1U367-301-1	31	GYRO, HORIZON
200DC	31	GYRO, DIRECTIONAL (ELECTRIC)
20700-6	32	PUMP
20B380-1	31	INDICATOR, TURN & BANK
2100-1020-00	31	SOLID STATE COCKPIT VOICE RECORDER
2100-1020-02	31	SS COCKPIT VOICE REC.
2100101-2	21	BLOWER, COMB AIR
22400-5	32	VALVE
22702-532	34	ALTIMETER
22A736	71	GENERATOR, TACH
22E24-1	21	SENSOR
22E24-3	21	SENSOR
230-1	33	CONTROL, DIMMER
23046-006	71	GENERATOR, STARTER
23048-006	24	GENERATOR, STARTER
23048-016	24	GENERATOR, STARTER
23048-016	71	GENERATOR, STARTER
23048-018	24	GENERATOR, STARTER
23048-018	71	GENERATOR, STARTER
23085-001	24	GENERATOR, STARTER
244-416	32	STATIONARY DISC
244-528	32	ROTATING DISC

PART NUMBER	CHAPTER	DESCRIPTION
24929-018	34	ALTIMETER
24929-412	34	ALTIMETER
24929-414	34	ALTIMETER
24929-951	34	ALTIMETER
24E88-7	21	VALVE, SHUTOFF
24E88-8	21	VALVE, SHUTOFF
251411-	56	WINDOW
2524439-5	71	CONTROL UNIT, FUEL
2524440-5	71	CONTROL UNIT, FUEL
25510B25B8A3	31	INDICATOR, FUEL FLOW
25700-9	32	ACTUATOR
26501-2	21	MOTOR, AC COMPRESSOR
267-901-003	28	INDICATOR, FUEL QUANTITY
267-917-001	31	INDICATOR, FUEL FLOW
267-978-001	31	INDICATOR, FUEL FLOW
27-6	27	FLAP, MOTOR
28007-214	34	ALTIMETER
28704-D4001	34	ENCODING ALTIMETER
2BC31N1B	21	MOTOR
2CM9AAH4	77	GENERATOR, TACH
2H3-11	30	VALVE, VAC REGULATOR
3-1209-2	32	WHEEL, NOSE ASSEMBLY
30-0467-5	33	LIGHT ASSEMBLY
30-1	32	BRAKE ASSEMBLY
30-1329-5	33	STROBE ASSEMBLY, WING TIP
30-1329-6	33	STROBE ASSEMBLY, WING TIP
30-1331-3	33	STROBE ASSEMBLY,
30-1467-1	33	STROBE ASSEMBLY,
30-24	32	BRAKE, ASSEMBLY
30-304	26	AMPLIFIER
30-326-7	26	AMPLIFIER
30-75B	32	BRAKE, ASSEMBLY
30-79A	32	BRAKE, ASSEMBLY
300-903-006	28	INDICATOR, FUEL QUANTITY
300-903-006	31	INDICATOR, FUEL QUANTITY
3009C	21	PUMP, HEATER FUEL
3022954-	75	VALVE, BLEED
3027249-	75	VALVE, BLEED
3027427-	75	VALVE, BLEED
3027631-	75	VALVE, BLEED
3029174-	75	VALVE, BLEED
309-4301	27	SWITCH, TRIM,
30B371-5	31	INDICATOR, TACH
3100829-	75	VALVE, BLEED
3100922-	75	VALVE, BLEED
3100923-	75	VALVE, BLEED
3103174-04	75	VALVE, BLEED
316-100	79	TRANSMITTER, OIL PRESS
31700-4	32	ACCUMULATOR
318-01010	71	TRANSMITTER, TORQUE
318-50-D1	71	TRANSMITTER, TORQUE
318-65-D1	28	TRANSMITTER, FUEL FLOW
319A280	27	MOTOR, TRIM

PART NUMBER	CHAPTER	DESCRIPTION
32164-000	77	GENERATOR, TACH
3244745-2	71	CONTROL UNIT, FUEL
3244755-	71	CONTROL UNIT, FUEL
3244768-	71	CONTROL UNIT, FUEL
329T-1	31	INDICATOR, TURN & SLIP
33-130000-4435-165050-	27	AILERONFLAP
342-24	32	WEAR PAD
342-89	32	WEAR PAD
342-93	32	WEAR PAD
35-380092-1	21	SWITCH, DIFF PRESSURE
3571211-9009	31	INDICATOR, FUEL FLOW
3571212-0053	31	INDICATOR, FUEL FLOW
3601-2	27	COMPUTER, LIFT
3601-35	27	COMPUTER, LIFT
3601-42	27	COMPUTER, LIFT
3601-7	27	COMPUTER, LIFT
369876-24	74	IGNITION, LEAD
369876-8	74	IGNITION, LEAD
369949-3	74	IGNITER
3701-10	27	TRANSDUCER
3701-250-130002-	27	TRANSDUCER AILERON
38E59-4B	30	REGULATOR
38E85-2B	21	REGULATOR, BLEED AIR
38E85-2B	30	REGULATOR
38E97-2A	30	VALVE, DISTRIBUTION
3940231-9004	31	INDICATOR, TACH
3941231-9002	31	INDICATOR, TACH
3941233-9006	31	INDICATOR, TACH
3941233-9007	31	INDICATOR, TACH
3E1150-10	30	TIMER, DEICE
3E1150-12	30	TIMER, DEICE
3E1150-3	30	TIMER, DEICE
3E1150-7	30	TIMER, DEICE
3E1964-3	30	TIMER, DEICE
3E2090-1	30	BRUSH, MODULAR
3E2092-2	30	LEAD
40-0100-1	33	BEACON, ROTATING
40-0127-1	33	BEACON, ROTATING
40-0127-1C	33	BEACON, ASSEMBLY
40-1	32	MOTOR, LANDING GEAR
40-3	32	MOTOR, LANDING GEAR
40-6	32	MOTOR, LANDING GEAR
4000B-10	31	GYRO, AIR DIRECTIONAL
4000B-28	31	GYRO, HORIZON
40600-8	32	ACTUATOR, MAIN LANDING GEAR
418-06014	71	TRANSMITTER, TORQUE
424-3	28	VALVE, SHUTOFF
4402-	35	VALVE, OXYGEN SHUTOFF
444EN49-6	32	SWITCH, SQUAT
4706-20	21	VALVE, SHUTOFF
4706-20	30	VALVE, SHUTOFF
4706-21	30	VALVE, SHUTOFF
4706-22	21	VALVE, SHUTOFF

PART NUMBER	CHAPTER	DESCRIPTION
4706-22	30	VALVE, SHUTOFF
4706-23	30	VALVE, SHUTOFF
4706-24	30	VALVE, SHUTOFF
4706-4	21	VALVE, SHUTOFF
4706-4	30	VALVE, SHUTOFF
4706-5A	21	VALVE, SHUTOFF
4706-5A	30	VALVE, SHUTOFF
4711-5	30	VALVE, SHUTOFF
4A142-9	32	ACTUATOR
4E1188-3	30	PROP, DEICE BOOT
4E1188-5	30	PROP, DEICE BOOT
4E1555-	30	SLIP RING
4E2200-10	30	PROP, DEICE BOOT
50-160003-97	27	FLAP
50-300010-119	32	BRAKE, ASSEMBLY
50-300011-133	32	WHEEL, ASSEMBLY
50-300011-41	32	WHEEL, ASSEMBLY
50-364090-	27	FLAP, MOTOR
50-364266-27	33	BEACON
50-364322-	91	ANNUNCIATOR, CONTROL
50-380023-1	31	INDICATOR, TURN & BANK
50-380024	31	INDICATOR, TURN & BANK
50-380034-3	31	INDICATOR, TACH
50-380035-5	31	INDICATOR, TACH
50-380041-1	21	MOTOR, AC COMPRESSOR
50-380041-3	21	MOTOR, AC COMPRESSOR
50-380041-5	21	MOTOR, AC COMPRESSOR
50-380045	31	INDICATOR, CABIN CLIMB
50-380046-11	31	ALTIMETER, CABIN
50-380046-17	31	ALTIMETER, CABIN
50-380046-19	31	ALTIMETER, CABIN
50-380046-3	31	ALTIMETER, CABIN
50-380067	31	DC LOADMETER
50-380069	31	ALTIMETER
50-380070-	30	CONVERTER, W/S WIPER
50-380071	30	MOTOR, W/S WIPER
50-380076-5	24	GENERATOR, STARTER
50-380105-1	31	INDICATOR, PNEU. PRESS.
50-380108	71	TRANSMITTER, TORQUE
50-380114-	32	MOTOR, LANDING GEAR
50-380114-5	32	MOTOR, LANDING GEAR
50-380116	21	BLOWER, VENT
50-380177-5	28	PUMP, FUEL (BOOST)
50-384040-	34	PITOT, TUBE HEATED
50-384040-3	30	PITOT, TUBE
50-384040-5	30	PITOT, TUBE
50-384073	31	INDICATOR, VERTICAL SPEED
50-384082-1	30	W/S WIPER BLADES
50-384110	31	INDICATOR, TURN & BANK
50-384112-1	24	RELAY
50-384162	31	INDICATOR, AIRSPEED
50-384202-3	31	GYRO, DIRECTIONAL
50-384203	31	GYRO, DIRECTIONAL

PART NUMBER	CHAPTER	DESCRIPTION
50-384204	31	GYRO, DIRECTIONAL
50-384205	31	GYRO, DIRECTIONAL
50-389029-	28	FUEL CELL
50-389031	28	INDICATOR, FUEL QUANTITY
50-389034-	28	FUEL CELL
50-389035	28	FUEL CELL
50-389043-1	61	GOVERNOR, PROP
50-389044-11	61	GOVERNOR, OVERSPEED
50-389048-1	79	COOLER, OIL
50-389048-11	79	COOLER, OIL
50-389048-3	79	COOLER, OIL
50-389053	28	PUMP, FUEL
50-389053-5	28	PUMP, FUEL
50-389057-1	71	GENERATOR, TACH
50-389057-1	77	GENERATOR, TACH
50-389066-3	61	GOVERNOR, PROP
50-389077-13	61	GOVERNOR, OVERSPEED
50-389077-15	61	GOVERNOR, PROP
50-389091-	31	INDICATOR, PROP SYNC.
50-389094-5	28	PUMP, TRANSFER
50-389095	28	VALVE, CROSSFEED
50-389096-1	21	VALVE, SHUTOFF
50-389102-1	31	INDICATOR, ITT
50-389102-11	31	INDICATOR, ITT
50-389102-19	31	INDICATOR, ITT
50-420066-	56	WINDOW
50-500054-5	28	SWITCH, XFR PUMP WARNING
50-521152-1	27	FLAP, ACTUATOR INBOARD LH
50-521152-2	27	FLAP, ACTUATOR INBOARD RH
50-521198-3	27	FLAP, ACTUATOR OUTBOARD LH
50-521198-4	27	FLAP, ACTUATOR OUTBOARD RH
50-521222-3	27	FLAP, ACTUATOR INBOARD LH
50-521222-4	27	FLAP, ACTUATOR INBOARD RH
50-521223-3	27	FLAP, ACTUATOR OUTBOARD LH
50-521223-4	27	FLAP, ACTUATOR OUTBOARD RH
50-524161-	27	ACTUATOR
50-554228-147	21	HEATER, ASSEMBLY
50-554341-	21	VALVE, BY PASS ASSEMBLY
50-580076-3	71	GENERATOR, STARTER
50-610000-	27	ELEVATOR
50-810164-	32	ACTUATOR, MAIN LANDING GEAR
50-810200-660	32	MOTOR & GEAR BOX
50-810337-	32	DRAG LEG, UPPER ASSEMBLY
50-810338-5	32	HOOK
50-820004-3	32	DAMPNER, ASSEMBLY
50-820205-21	32	DRAG BRACE, ASSY (FLOTATION)
50-820208-5	32	ACTUATOR, NOSE GEAR
50-910274	30	LOWER COWL
50-910274-	71	COWL, ASSEMBLY
50-920101-	28	FUEL CELL
50-921552-	28	FUEL CELL
50-921554-	28	FUEL CELL
5000B-10	31	GYRO, HORIZON (AIR)

PART NUMBER	CHAPTER	DESCRIPTION
5001-4	21	BLOWER
5004-1	21	BLOWER
501-1204-01	34	VERTICAL GYRO
50192A	74	IGNITION, LEAD
50221-24	74	IGNITION, LEAD
50221-8	74	IGNITION, LEAD
50383E	74	IGNITION, LEAD
50383S	74	IGNITION, LEAD
505-0002-904	31	GYRO, DIR. (ELECTRIC)
509-0003-901	31	INDICATOR, TURN & BANK
51530-001 SERIES	24	GENERATOR, CONTROL
51530-007B	24	GENERATOR, CONTROL
51538-001A	24	GENERATOR, CONTROL
522-079	31	INDICATOR, OIL PRESS/TEMP.
522-2900-099	22	AUTOPILOT AMPLIFIER
5485-020	61	ACTUATOR, SYNC.
56-2-1	21	MOTOR
562-898	31	METER, VOLT/LOAD
562-939	31	LOADMETER
562-974	31	DC LOADMETER
562-982	31	INDICATOR, OIL PRESS/TEMP.
563-100	31	INDICATOR, OIL PRESS/TEMP.
563-110	31	DC LOADMETER
563-124	31	DC LOADMETER
563-266	31	INDICATOR, OIL PRESS/TEMP.
56881-2	28	PUMP, TRANSFER
570-518	31	METER, AC
570-529	31	METER, AC VOLT, FREQ.
570-531	31	METER, VOLT
570-536	31	METER, AC VOLT C637
5709-1006	31	INDICATOR, FUEL FLOW
571-25005-012	31	ALTIMETER, ENCODING
58-380069-5	31	ALTIMETER
5D700-000	79	COOLER, OIL
5D700-005	79	COOLER, OIL
5D875-005	21	EVAPORATOR
60-130001-163	27	AILERON
60-1750-3	33	POWER SUPPLY, STROBE
60-2799-1	33	POWER SUPPLY, STROBE
60-384002-5	21	BLOWER, ASSEMBLY
60-384002-7	21	BLOWER, ASSEMBLY
60-384002-9	21	BLOWER, ASSEMBLY
60-610000-	27	ELEVATOR
6041H189	24	RELAY
6041H205A	24	RELAY
6046H39	27	RELAY
6046H39A	27	RELAY
6046H39B	27	RELAY
622-0555-003	31	INDICATOR
622-0876-201	34	NAV RECEIVER VIR-30A
622-1204-003	31	RADIO ALTIMETER INDICATOR
622-1233-001	34	DME-40
622-1270-001	23	ATC XPONDER TDR-90

PART NUMBER	CHAPTER	DESCRIPTION
622-2362-001	34	AUTOMATIC DIRECTION FINDER ADF-60A
622-2937-004	31	RADIO ALTIMETER INDICATOR
622-3108-021	22	AUTO PILOT
622-3975-003	34	ENCODING ALTIMETER
622-3975-004	34	ENCODING ALTIMETER
622-3975-005	34	ENCODING ALTIMETER
622-3975-014	34	ALTIMETER
622-4160-015	31	DRI-55
622-4394-001	31	CONTROLLER
622-4938-007	31	RMI INDICATOR
622-6020-021	34	EFD-85 ELECTRONIC FLIGHT DISPLAY
622-6136-002	34	DIRECTIONAL GYRO
622-6137-001	34	VIR32
622-6137-201	34	VIR 32 NAV RECEIVER
622-6152-001	23	VHF COMM TRANSCEIVER
622-6152-011	23	VHF COMM RECEIVER
622-6197-001	34	ELECTRONIC FLT DISPLAY
622-6198-012	31	HPU-74 HSI PROCESSOR
622-6263-003	23	DME RT
622-6521-013	23	CONTROLLER
622-7292-101	23	VHF COMM
622-7410-302	34	FLIGHT CONTROL COMPUTER
622-7577-099	34	AIR DATA COMPUTER
622-8051-003	34	ADC-85
622-8315-402	22	AUTOPILOT COMPUTER
622-8678-007	31	DISPLAY PROCESSOR
622-8678-008	31	DISPLAY PROCESSOR
622-8679-007	31	MPU-85N
622-8679-008	31	MPU-85N
622-8971-122	31	ACAS II PROCESSOR (SW 7)
622-8973-001	30	ANTENNA
622-9301-003	30	RTA-842
622-9302-003	30	RADAR RT/ANTENNA
622-9345-203	34	ELECTRONIC FLIGHT DISPLAY
622-9462-024	34	ALTERTER
622-9681-001	34	ELECTRONIC FLIGHT DISPLAY
622-9682-004	31	DISPLAY PROCESSOR
622-9683-111	31	DSP-84 DISPLAY SELECT PANEL
622-9724-030	22	AUTOPILOT COMPUTER APC-65H
622-9728-314	34	VSI/TRA
622-9735-001	34	SENSOR DISPLAY UNIT
66-104-3	71	TRANSMITTER, FUEL FLOW
6652-920	61	ACTUATOR, SYNC.
68820-1121	31	INDICATOR, OIL PRESS/TEMP.
7000466-902	31	ATTITUDE DIRECTION INDICATOR
7000622-901	34	VG14A GYRO
7000700-668	31	AIR DATA COMPUTER, DIGITAL
7000839-902	31	RADIO ALTIMETER INDICATOR
701148-7-1	33	STROBE ASSEMBLY, WING
7014300-901	34	DISPLAY
7018879-03014	34	FLIGHT MANAGEMENT COMPUTER
7040B	31	INDICATOR, VERTICAL SPEED
72444002-920013-	28	PUMP,FUEL CELLFUEL

PART NUMBER	CHAPTER	DESCRIPTION
7516100-60050	23	SATELLITE DATA UNIT
7516250-60050	23	HIGH POWER AMPLIFIER
777-1406-026	34	YAW DAMPER
78035-11109	31	INDICATOR, OIL PRESS/TEMP.
78035-11116	31	INDICATOR, OIL PRESS/TEMP.
792-6091-002	31	HORIZONTAL SITUATION INDICATOR
792-6091-015	31	HORIZONTAL SITUATION INDICATOR
792-6703-001	34	FLIGHT COMPUTER
795-13	27	LIFT, DETECTOR
795-3	27	LIFT, DETECTOR
795-5	27	LIFT, DETECTOR
795-6	27	LIFT, DETECTOR
795-9	27	LIFT, DETECTOR
8-060-10	61	SWITCH, PROX PC BOARD
801292-01	35	REGULATOR, OXYGEN
8030B62	31	INDICATOR, AIRSPEED
8047-20	34	ALIMETER
8047-700-53	34	ALTIMETER
81-101-1	28	INDICATOR, FUEL QUANTITY
81-101-1	31	INDICATOR, FUEL QUANTITY
81-101-3	28	INDICATOR, FUEL QUANTITY
81-101-3	31	INDICATOR, FUEL QUANTITY
81-175-2	28	INDICATOR, FUEL QUANTITY
81-175-2	31	INDICATOR, FUEL QUANTITY
8210-002	61	GOVERNOR, PROP
8210-003	61	GOVERNOR, PROP
8210-007	61	GOVERNOR, PROP
8210-024	61	GOVERNOR, PROP
8210-025	61	GOVERNOR, PROP
8210-193	61	GOVERNOR, PROP
8210-212	61	GOVERNOR, PROP
8210-393	61	GOVERNOR, PROP
822-0389-433	34	AIR DATA COMPUTER
822-0760-002	34	VOR/ILS NAV RECEIVER
822-0761-001	34	RECEIVER, VOR/ILS
822-1019-313	34	FLIGHT CONTROL COMPUTER
822-1019-313	34	FLIGHT CONTROL COMPUTER
822-1115-001	23	VHF COMM TRANSCEIVER (8.33)
822-1294-002	34	TCAS/ACAS PROCESSOR (SW7)
83-1000-5	32	SWITCH, LANDING GEAR
83-1000-9	32	SWITCH, LANDING GEAR
8529M2	30	ACTUATOR, ICE VANE
86000-0177	31	CLOCK
861-006	26	BOTTLE, FIRE EXTINGUISHER
90-160000-	27	FLAP
90-364035-7	91	ANNUNCIATOR, CONTROL
90-380000-3	21	REGULATOR, BLEEDAIR
90-380000-3	30	REGULATOR, PRESSURE
90-380001-23	32	MASTER CYLINDER
90-380009-2	31	INDICATOR, FUEL FLOW
90-380010-1	21	SWITCH, DIFF.E152 PRESSURE
90-384019-1	21	RECEIVER/DRYER
90-384026-11	31	INDICATOR,

PART NUMBER	CHAPTER	DESCRIPTION
90-384026-15	31	INDICATOR,
90-384026-23	31	INDICATOR, ITT
90-384026-25	31	INDICATOR,
90-384026-27	31	INDICATOR,
90-384026-29	31	INDICATOR,
90-384026-3	31	INDICATOR, ITT
90-384026-31	31	INDICATOR, ITT
90-384028-5	31	INDICATOR, PROP. TACH
90-384031-1	21	BLOWER
90-389007-1	61	CONSTANT SPEED UNIT
90-920028-1	28	PUMP, FUEL
90029-	33	LIGHT ASSEMBLY, RECOG
91-360011-1	91	PANEL, RELAY
91-380002-3	32	MOTOR, LANDING GEAR
91-380012-3	31	INDICATOR, TORQUE
91-380018-1	31	INDICATOR, TURN & BANK
91-380019-1	31	INDICATOR, TURN & BANK
9133-25-B1	28	TRANSMITTER, FUEL FLOW
93-A100-80	31	COCKPIT VOICE RECORDER
95-160000-	27	FLAP
96-526000-	27	ACTUATOR, TRIM RUDDER
96-526000-605	27	ACTUATOR, TRIM RUDDER
96-610006-601	27	ELEVATOR W/TAB
96-610006-655	27	ELEVATOR W/TAB
97-380000-17	21	PNEUMOSTAT
97-380000-17	36	PNEUMOSTAT
97-380000-33	21	FLOW PACK
97-380000-33	36	FLOW PACK
97-384009-1	31	INDICATOR, OIL PRESSURE
97-384009-3	31	INDICATOR, OIL PRESSURE
97-389000-3	61	GOVERNOR, OVERSPEED
99-130000-	27	AILERON
99-364205-1	91	PANEL, RELAY
99-364207-1	91	BATT CHARGE MONITOR
99-364210-1	91	CONTROL, FLAP
99-364212-1	91	CAUTION ADVISORY
99-364214-1	91	CONTROL, WARNING
99-364228-1	91	TIME DELAY
99-364230-1	91	CONTROL, AIRCOND
99-380000-	28	FUEL CELL
99-380010-3	21	VALVE, BLEEDAIR SHUTOFF
99-384030-5	31	INDICATOR, TORQUE
99-384033-7	21	BLOWER, COMB AIR
99-384039	31	ALTIMETER
99-389005-1	28	PROBE, FUEL QUANTITY
99-524025-	27	FLAP, MOTOR & GEARBOX
99-524025-7	27	FLAP, MOTOR & GEARBOX
99-8003-5	32	BRAKE, ASSEMBLY (FLOTATION)
99-8003-7	32	MLG WHEEL, ASSY (FLOTATION)
99-8004-3	32	WHEEL, MLG ASSEMBLY
99-810045-	32	LINK
99-810057-651	32	ACTUATOR, MAIN GEAR
99-810057-652	32	ACTUATOR, MAIN GEAR

PART NUMBER	CHAPTER	DESCRIPTION
A-1090	24	START PANEL
A1050	31	INDICATOR, TURN & BANK
A16A	79	COOLER, OIL
A210507	61	GOVERNOR, OVERSPEED
A210578	61	GOVERNOR, PROP
A210632	61	GOVERNOR, OVERSPEED
A213796	61	CONTROL BOX, SYNC.
A24A9238	21	BLOWER, COMB AIR
A3026	61	BLOCK, CARBON
A3044	61	BLOCK, CARBON
A4503M9-1	31	CONTROL, LANDING GEAR
A4503M9-1	32	CONTROL, LANDING GEAR
A4503M9-3	31	CONTROL, LANDING GEAR
A4503M9-3	32	CONTROL, LANDING GEAR
A4503M9-5	31	CONTROL, LANDING GEAR
A4503M9-5	32	CONTROL, LANDING GEAR
A5278110302	77	GENERATOR, TACH
A7079B24	33	LAMP
AGF2-6	74	IGNITER
AM10465-3	31	INDICATOR, OIL PRESS/TEMP.
AN2552A3A	24	EXT PWR RECEPTACLE
AN5786-1	27	FLAP, POSITION TRANSMITTER
ANS-85	31	INDICATOR, TURN & BANK
AT4220A5	31	CLOCK, DIGITAL
AV16B1700B	28	VALVE, SHUTOFF
AV16B2070B1	28	VALVE, SHUTOFF
AV1B1602	28	VALVE, CROSSFEED
AV1B1614	21	VALVE, SHUTOFF
AW2829AS05	31	INDICATOR, AIRSPEED
AYLF2336-2	21	OAT SENSOR
AYLF50304	21	SENSOR ELEMENT
B210631	61	GOVERNOR, OVERSPEED
B365-5	31	INDICATOR, PROP. TACH
B366-3	31	INDICATOR, TACH
B367-1	31	INDICATOR, PROP. TACH
B381	31	INDICATOR, TURN & BANK
B40245-50	30	PROP, DEICE BOOT
BYLB50822	21	VALVE, BLEED AIR SHUTOFF
BYLB50824	21	VALVE, BYPASS
BYLB51089	21	VALVE, SHUTOFF
BZ7RW82255518T	27	FLAP, SWITCH
C10D40	21	HEATER, ASSEMBLY
C241-500B	21	BLOWER, ASSEMBLY
C241-500BB	21	BLOWER, ASSEMBLY
C241-500BD	21	BLOWER, ASSEMBLY
C241-500C	21	BLOWER, ASSEMBLY
C316A	21	BLOWER, ASSEMBLY
CH31547C	74	IGNITER
CH34055	74	IGNITER
CSV1105-2	24	REGULATOR
CSV1105-20	24	REGULATOR
CSV1152-10	24	REGULATOR
CYLZ5346	21	CONTROL BOX

PART NUMBER	CHAPTER	DESCRIPTION
CYLZ8968	21	CONTROL BOX
CYLZ9860-1	21	CONTROL BOX, TEMP.
DSF989-3	31	INDICATOR, FUEL QUANTITY
EA173E-2	27	FLAP, POSITION TRANSMITTER
EM2091-6	21	MOTOR
EM40-3	32	MOTOR, LANDING GEAR
EM404	27	FLAP, MOTOR & GEARBOX
EM407	27	FLAP, MOTOR & GEARBOX
EM407-1	27	FLAP, MOTOR & GEARBOX
EM418	30	ACTUATOR, ICE VANE
EM424-3	28	VALVE, SHUTOFF
EM424-4	28	VALVE, SHUTOFF
EM424-8	28	VALVE, SHUTOFF
EM450-4	30	ACTUATOR, ICE VANE
EM450-5	30	ACTUATOR, ICE VANE
EM508	27	GEAR BOX
EM55-6	21	MOTOR
EM55-7	21	MOTOR
EM603-7	21	BLOWER, ASSEMBLY
EM603-9	21	BLOWER, ASSEMBLY
EM609-4	21	BLOWER, ASSEMBLY
EM630	21	BLOWER, ASSEMBLY
EM640-1	21	BLOWER, VENT
EM8001	77	GENERATOR, TACH
ESD-3	23	STATIC WICK
ESD-4C	23	STATIC WICK
F7-51-5	21	CONTROLLER
F7-51-5	36	CONTROLLER, ELECTRONIC
FS36-1	27	FLAP, MOTOR
G7740-7-44	33	BEACON
G7740-A19-24	33	BEACON, ROTATING
GYR 6B-11	32	RIVET
GYR 6B-5	32	RIVET
GYR6A-14	32	RIVET
H60-000	77	GENERATOR, TACH
HCB4MP3CM10476NSK	61	PROPELLER
HYLZ50336-1	21	CONTROL BOX, TEMP.
HYLZ51071	21	CONTROL BOX, TEMP.
LC-2A-5	31	CLOCK, DIGITAL
LT-52A	33	POWER SUPPLY, 5V
M3436MB	21	MOTOR, FAN
M7921C-2B	21	FAN, CONDENSOR
MC815AS1	24	CONTROL, LANDING GEAR
MC815AS1	32	CONTROL, LANDING GEAR
MD-105-1	31	INDICATOR, PNEU. PRESS.
MD-106-5	31	DC LOADMETER
MD-111-3	31	GYRO SUCTION GAUGE
MD-124-1	31	INDICATOR, CABIN AIRTEMP
MD-63-3	31	INDICATOR, OIL PRESS/TEMP.
MI585350-5	30	RADAR
MS24523-23	27	SWITCH, ELEVATOR TRIM
MS25038-4	77	GENERATOR, TACH
MS28034-3	79	BULB, OIL TEMP.

PART NUMBER	CHAPTER	DESCRIPTION
NCA6301-1000	28	VALVE, MOTIVE FLOW
NYLC50427	21	VALVE, MOTOR
NYLC51101	21	ACTUATOR
NYLC9871	21	VALVE, MOTOR
P2-110311	27	SWITCH, TRIM DISCONNECT
PC 125	24	STATIC INVERTER
PC15A	24	STATIC INVERTER
PC15BC	24	STATIC INVERTER
PC17	24	STATIC INVERTER
PC17-3	24	STATIC INVERTER
PC17A	24	STATIC INVERTER
PC250	24	STATIC INVERTER
PC251	24	STATIC INVERTER
PC350	24	STATIC INVERTER
PM23-5	27	MOTOR, PRIMARY
PM24-1	27	MOTOR, PRIMARY
PM46-1	27	MOTOR, PRIMARY
PW-28S-40CC-3	33	POWER SUPPLIES
PW6900027-1	31	INDICATOR, PROP. SYNC.
RA-825	32	RIVET TOOL
RA105-002	32	BRAKE RIVET
RA1288-3	30	PROP, DEICE BOOT
RA1288-5	30	PROP, DEICE BOOT
RA1543-	30	BRUSH
RA1989-2	30	LEAD
RA1989-3	30	LEAD
RA2111U	30	BRUSH, MODULAR
RA2111U-R0D	30	BRUSH, MODULAR W/ROD
RA2144-1	30	BRUSH, MODULE ASSEMBLY
RA2190-1	30	BRUSH, MODULE ASSEMBLY
RA2192-2	30	LEAD
RA2192-4	30	LEAD
RA2192-6	30	LEAD
RA2252-4RA2469-2	30	LEADPROP, DEICE BOOT
RA66-105	32	BRAKE LINING
RA66-105-4K	32	BRAKE LINING KIT
RA66-105-8K	32	BRAKE LINING KIT
RA66-106	32	BRAKE LINING
RA66-106-8K	32	BRAKE LINING KIT
RA66-111	32	BRAKE LINING
RA66-111-4K	32	BRAKE LINING KIT
RA66-22	32	BRAKE LINING
RA66-44	32	BRAKE LINING
RAPB-001	32	BRAKE RIVET
RC30V-10	31	INDICATOR, VERTICAL SPEED
RCA22-29	31	GYRO, HORIZON
RCA40B-03	31	INDICATOR, TACH
RFS 3005	32	WEAR PAD
RFS-15	32	ROTATING DISC
RFS-151	32	INSULATOR LINING
RFS-151	32	INSULATOR LINING
RFS-27	32	STATIONARY DISC
RFS100-820017-1	32	BUSHING
RFS1005	32	ROTATING DISC

PART NUMBER	CHAPTER	DESCRIPTION
RFS101 -810026-1	32	PIN
RFS101-810024-3	32	BUSHING
RFS105739X-YN1437	32	BUSHING
RFS105739X-YR0875	32	BUSHING
RFS105740X-YA1625	32	BUSHING
RFS105740X-YN0625	32	BUSHING
RFS105740X-YN0677	32	BUSHING
RFS114-810022-1	32	AXLE
RFS114-810038-1	32	BUSHING
RFS114-810042-1	32	BUSHING
RFS114-8200112-1	32	BUSHING
RFS114-820062-1	32	BUSHING
RFS114-820112-1	32	BUSHING
RFS115-810066-3	32	BUSHING
RFS1587	32	ROTATING DISC
RFS207-111	32	WEAR PAD
RFS207-4	32	WEAR PAD
RFS207-9	32	WEAR PAD
RFS2587	32	ROTATING DISC
RFS50-810035-2	32	PIN
RFS50-810035-4	32	PIN
RFS50005	32	STATIONARY DISC SUB-ASSY
RFS5010	32	PRESSURE PLATE SUB-ASSY
RFS5015	32	BACK PLATE - EXCHANGE
RFS6A14	32	RIVET
RFS6B11	32	RIVET
RFS6B5	32	RIVET
RFS90-820010-1	32	BUSHING
RFS99-810066-1	32	BUSHING
S100-0080-00	31	RECORDER
S703-1000-00	31	FLIGHT DATA RECORDER
S800-2000-00	31	SOLID STATE FLIGHT DATA REC
SM50D7	27	RELAY
SR-2AD	31	INDICATOR, TORQUE
SR-2AG	31	INDICATOR, TORQUE
SR-2AJ	31	INDICATOR, TORQUE
SR-2AK	31	INDICATOR, TORQUE
SR-2AM	31	INDICATOR, TORQUE
SR-2AU	31	INDICATOR, TORQUE
SR-94L	31	INDICATOR, OIL PRESS
SRSW-94A	31	INDICATOR, OIL PRESS
SRSW-94B	31	INDICATOR, OIL PRESS
ST3400-001	34	TAWS/RMI
ST3400-102	34	TERRAIN AWARENESS
SYLC50298-1	30	ACTUATOR, ICE VANE
SYLC50298-3	30	ACTUATOR, ICE VANE
TC18100J	77	T5 HARNESS
TG255-002	77	GENERATOR, TACH
VR1010-24-1A	24	REGULATOR, VOLTAGE
X702-287	21	BLOWER, COMB AIR
XW20173-M1	30	MOTOR, W/S WIPER
XW20345	30	CONVERTER, W/S WIPER
ZMR151M48B48A1	35	OXYGEN MASK, CREW

proaviation.com